

Montco Offshore



P.O. Box 850
17751 Hwy 3235
Galliano, LA 70354
Main Line: 985-325-7157
Fax: 985-325-6795
Toll Free: 877-666-6826

3 Riverway
Suite 100
Houston, TX 77056
Main Line: 281-822-7157
Fax: 281-822-6795
Web Site: www.Montco.com

Wayne Tyler
Vice President of Marketing
Cellular: 985-637-9175
E-mail: Wayne.Tyler@Montco.com

Mark Burke
Vice President of Business Development
Cellular: 985-637-3168
Email: Mark.Burke@Montco.com

Steven Burke
Business Development
Cellular: 832-482-5963
Email: Steven.Burke@Montco.com



Montco Offshore, Inc.
 17751 Hwy 3235
 Post Office Box 850
 Galliano, LA 70354
 Phone: (985) 325-7157
 Fax: (985) 325-6795

L/B BOBBY CLASS 145'

SELF-ELEVATING VESSEL -- YEAR BUILT - 1990
 OFFICIAL NUMBER - D965698 -- CALL SIGN - WCO8965

DIMENSIONS:

Length (Overall) 91'
 Beam (Overall) 65'
 Beam (Barge Only) 51.65'
 Depth (Barge Only) 8'
 Design Draft 6'

CAPACITIES:

Fuel 7,114 gal
 Potable Water 9,800 gal
 Lube Oil 150 gal
 Hydraulic Oil 1,300 gal
 Submersible Pumps 2 @ 150 GPM each

HULL CHARACTERISTICS:

Gross Tonnage Under 200
 Open Deck Area 1,850 sq. ft.
 Total Usable Space 2,600 sq. ft.
 Maximum Deck Load 315,000 lbs.

GENERATORS:

Engines (2) Detroit Diesel 6-71
 Generators (2) 75 KW Kato

LEGS:

Number 3
 Length 145'
 Size 42" diameter x 0.718" wall thickness
 Material API SLX-70 KSI Steel

LIVING QUARTERS:

Berths Total 29 (9 Crew / 20 PACs)
 Galley Ref., Fr., Ice Maker, Range
 Sanitary Facilities (4) Heads
 Laundry (1) Washer and (2) Dryers

PADS:

Length 24'
 Width 12'
 Depth 2'
 Configuration Raked on both ends

NAVIGATION EQUIPMENT:

Radar, VHF's, Fathometer, Compass,
 Single Sideband, AIS, Auto Pilot, GPS,
 Anemometer, Electronic Charting,

CRANE CAPACITY:

Number 2 (API-2C Certified)
 Crane 1 50 Tons @ 10'
 Boom Length (Telescoping) 50'-100'
 Crane 2 15 Tons @ 10'
 Boom Length (Telescoping) 30'-60'

JACKING:

Maximum Working Water Depth 100'
 Maximum Height of Deck above mud line
 (Subtract Penetration) 128'

SPECIAL FEATURES

Separate VIP Room Facilities,
 Zero Discharge Capability,
 Marine Sewage Treatment System

PROPULSION:

Main Engines (2) Detroit Diesel 12V-71N
 Horsepower/engine 365 @ 1800 rpm
 Reduction Gear Twin Disc MG-514 4.5:1

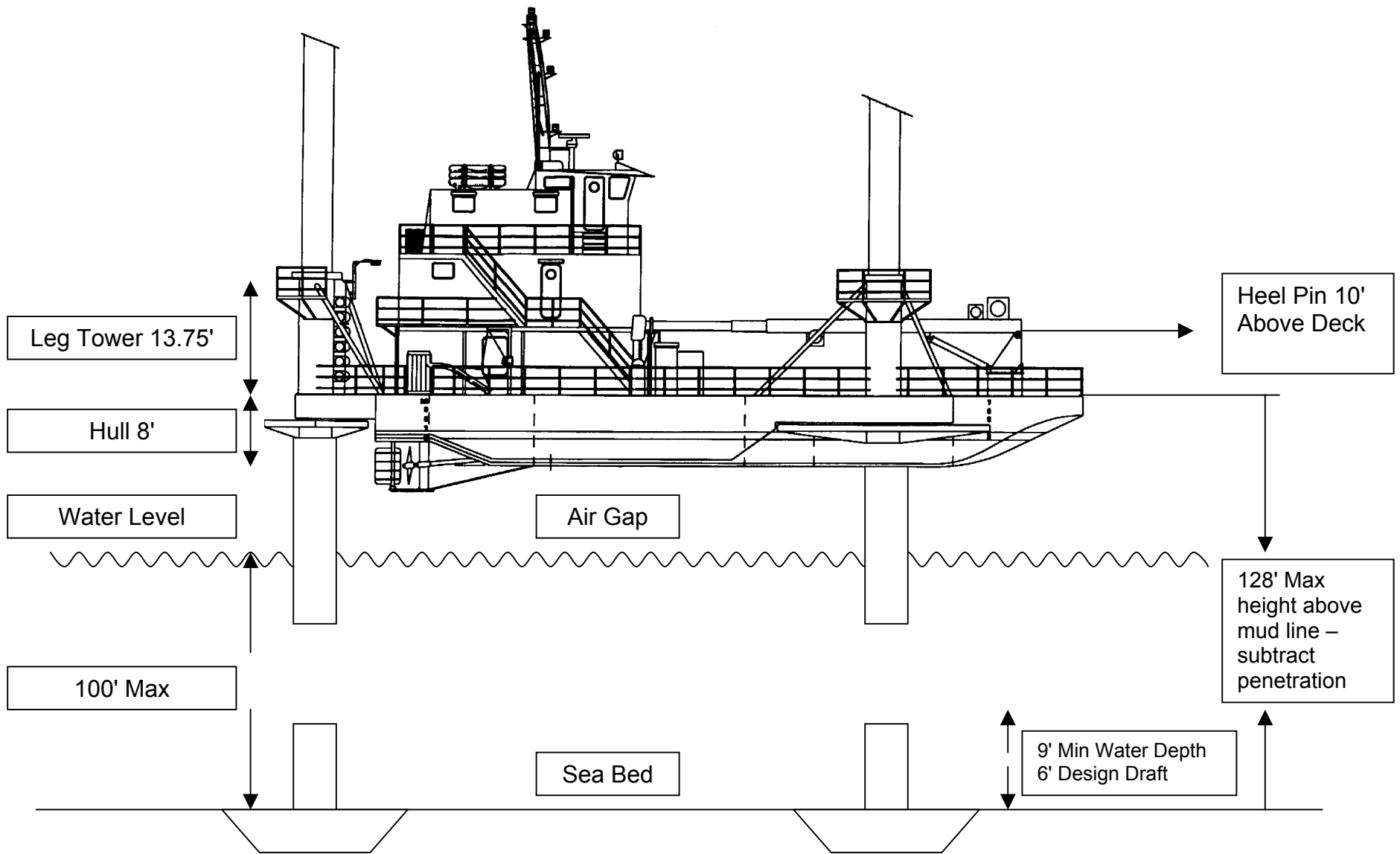
ESTIMATED SPEED: 6 Knots

FUEL CONSUMPTION:

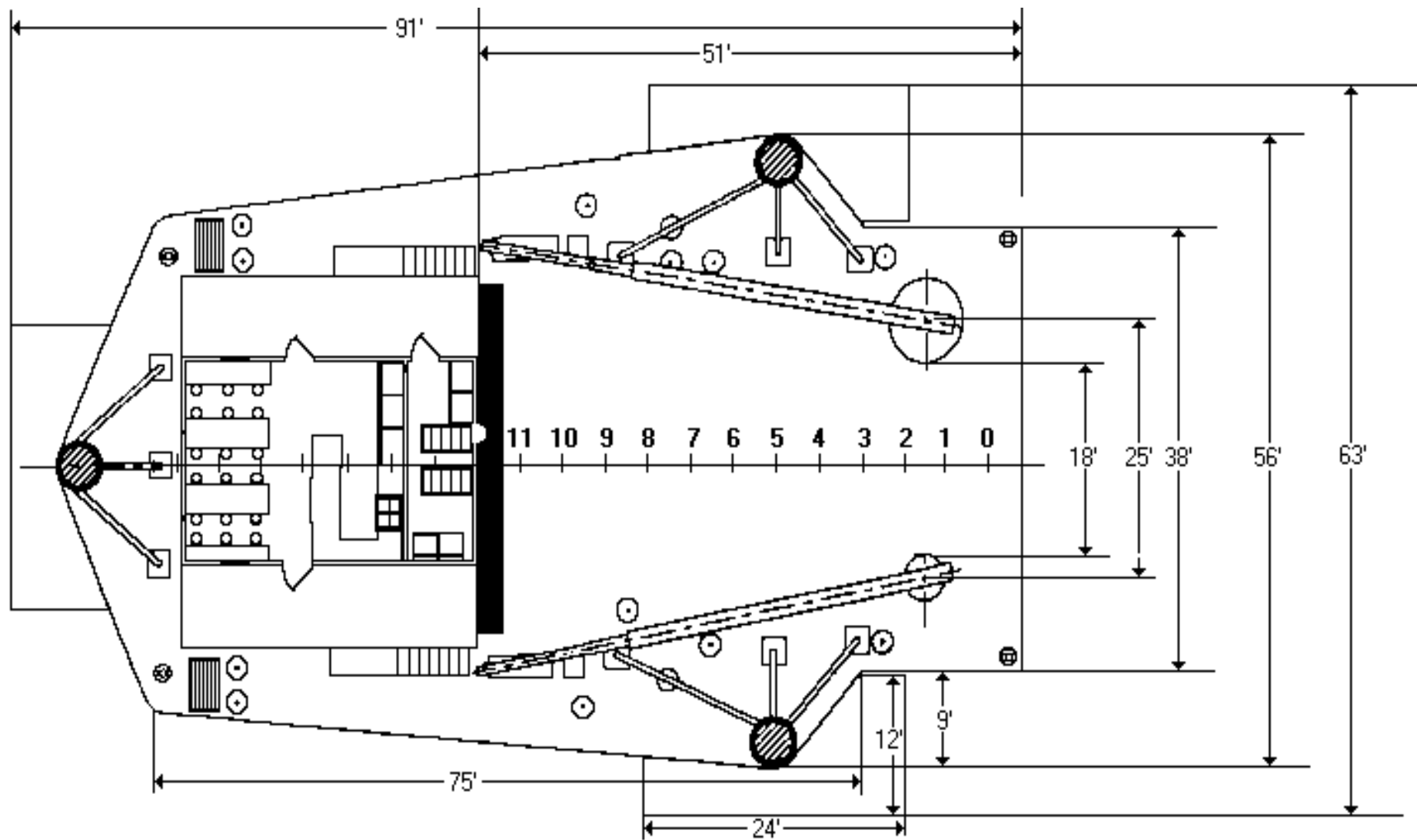
Main Engines 50 gal/hr = 1200 gal/day
 Generators 4 gal/hr = 108 gal/day
 Crane Engine 5 gal/hr

REGULATORY CLASSIFICATION:

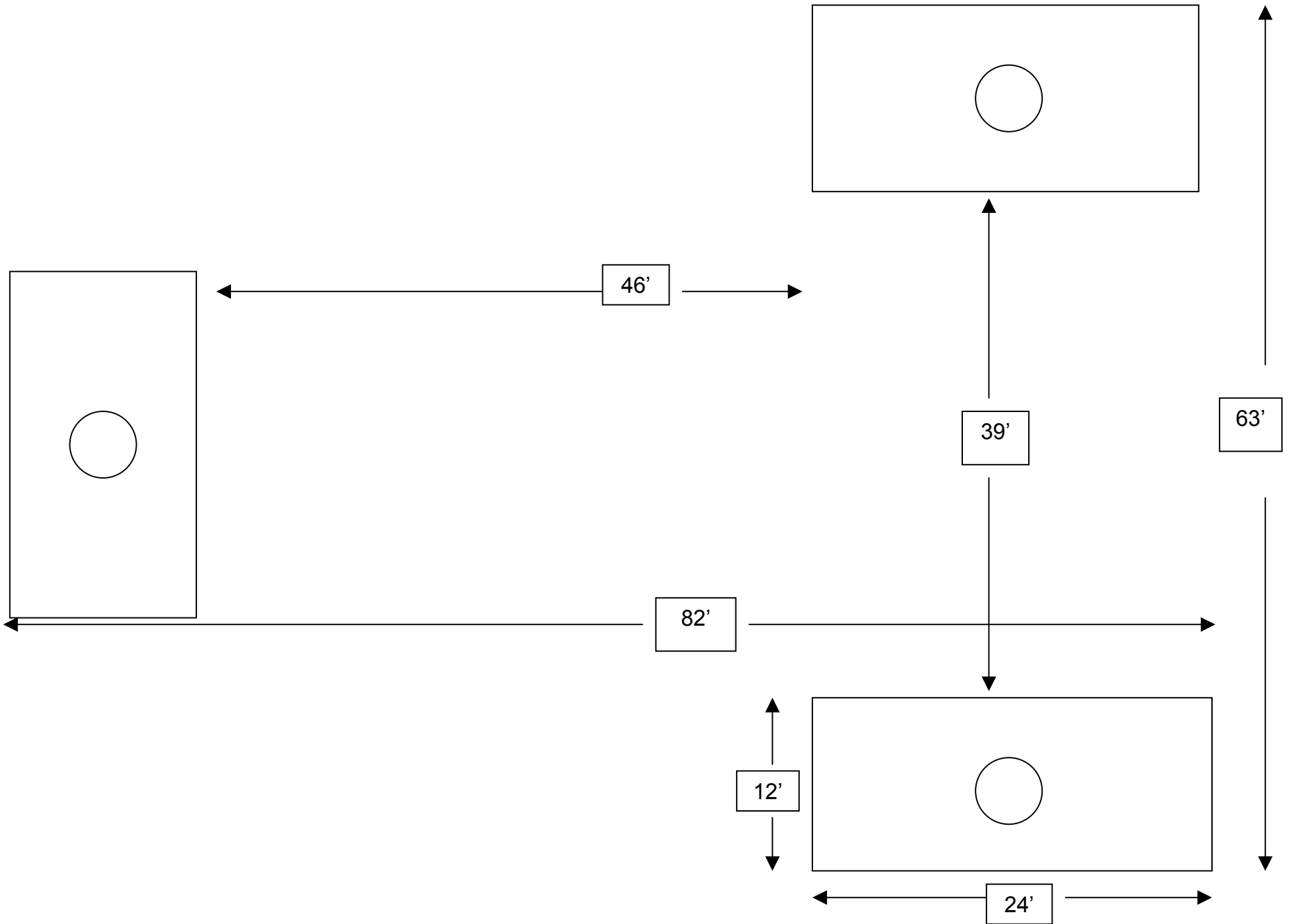
USCG O. S. V., ABS Load Line



L/B Bobby 145' Class



L/B Bobby Deck Layout



L/B Bobby (Distance between leg pads)

LOAD CHART (STATIC)

MAIN HOIST = 830' OF 6 x 25 IWRC-EIPS

AUX HOIST = 350' OF 19 x 7 IWRC-EIPS

EBI CRANES
TC 100
54' - 100' BOOM

MONTCO OFFSHORE, INC
L/B BOBBY
L/B CHRISTIE

MAIN HOIST - FIVE PART LINE					AUX. HOIST - 1 PART LINE	
FULLY RETRACTED			FULLY EXTENDED		FULLY EXTENDED	
RADIUS OF LOAD (FT)	CAPACITY (POUNDS)	BOOM ANGLE (DEGREES)	CAPACITY (POUNDS)	BOOM ANGLE (DEGREES)	CAPACITY (POUNDS)	BOOM ANGLE (DEGREES)
10	100,000	79	-	-	-	-
15	75,000	74	60,000	82	5000	82
20	57,000	68	51,000	79	5000	79
25	47,000	62	40,000	76	5000	76
30	40,100	56	33,000	73	5000	73
35	35,000	49	28,000	70	5000	70
40	31,000	42	23,000	66	5000	66
45	28,000	33	20,000	63	5000	63
50	25,000	22	18,000	60	5000	60
55	19,000	0	16,000	57	5000	57
60	-	-	15,000	53	5000	53
65	-	-	13,000	49	5000	49
70	-	-	12,000	45	5000	45
75	-	-	11,000	41	5000	41
80	-	-	10,000	37	5000	37
85	-	-	9,000	32	5000	32
90	-	-	8,000	26	5000	26
95	-	-	7,000	18	5000	18
100	-	-	4,500	0	4500	0

STATIC LOAD = DYNAMIC LOAD X 1.5 (NOTE: WINCH CAPACITY WILL BE LIMITING) PERSONNEL HANDLING LOAD = DYNAMIC LOAD DIVIDED BY 2

LOAD CHART (STATIC)

MAIN HOIST = 420' OF 3/4 19 x 7 IWRC-EIPS

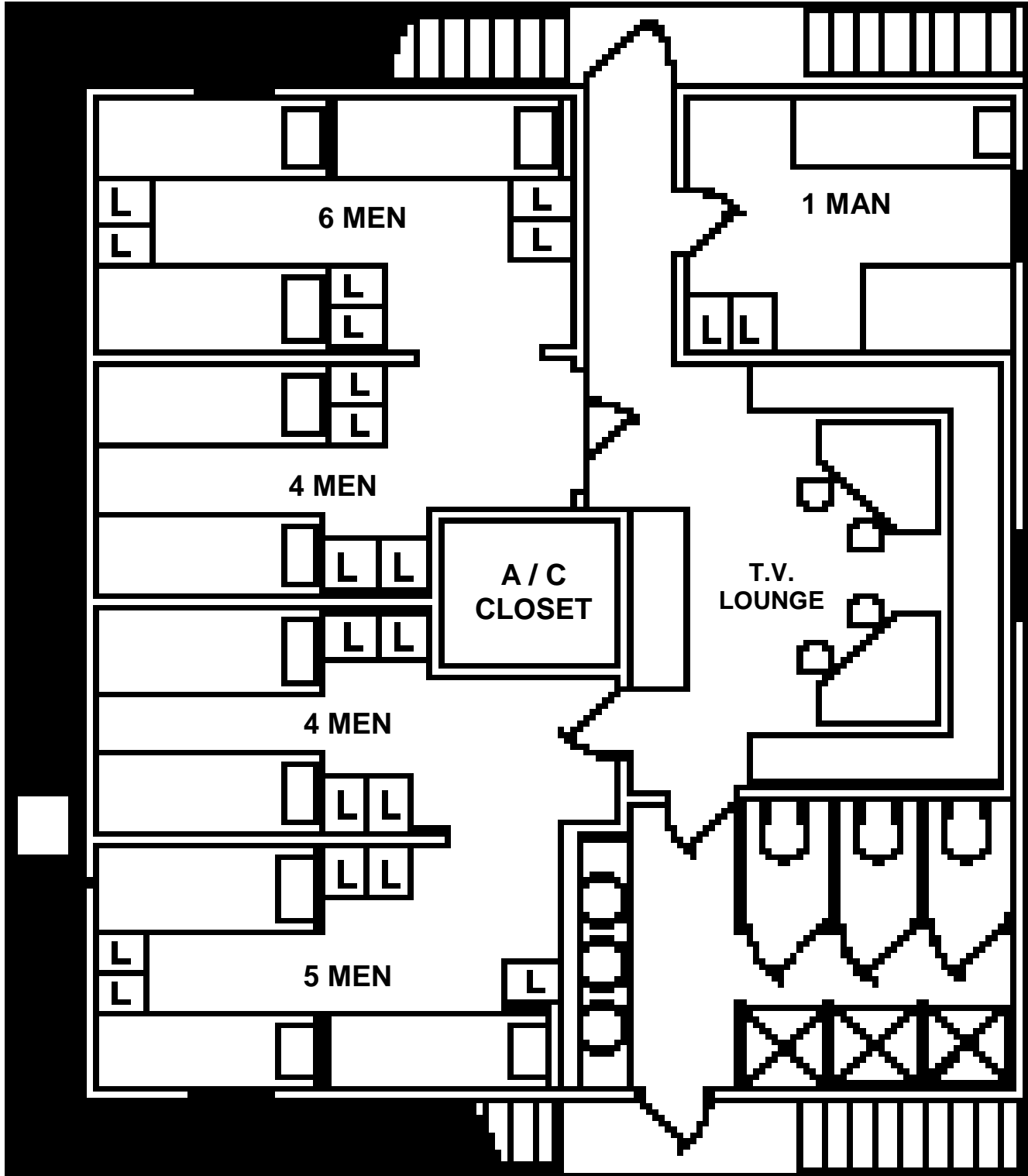
AUX HOIST = 300' OF 9/16 19 x 7 IWRC-EIPS

EBI CRANES
TC 30
34' - 60' BOOM

MONTCO OFFSHORE, INC
L/B BOBBY
L/B CHRISTIE

MAIN HOIST - THREE PART LINE					AUX. HOIST - 1 PART LINE	
FULLY RETRACTED			FULLY EXTENDED		FULLY EXTENDED	
RADIUS OF LOAD (FT)	CAPACITY (POUNDS)	BOOM ANGLE (DEGREES)	CAPACITY (POUNDS)	BOOM ANGLE (DEGREES)	CAPACITY (POUNDS)	BOOM ANGLE (DEGREES)
10	30,000	72	28,000	80	5,000	80
15	22,000	63	19,000	75	5,000	75
20	16,500	52	14,500	70	5,000	70
25	13,000	40	12,000	65	5,000	65
30	10,000	24	10,000	60	5,000	60
35	6,000	3	8,500	54	5,000	54
40	-	-	7,000	48	5,000	48
45	-	-	6,000	41	5,000	41
50	-	-	5,000	33	5,000	33
55	-	-	4,300	23	4,300	23
60	-	-	2,500	3	2,500	3

STATIC LOAD = DYNAMIC LOAD X 1.5 (NOTE: WINCH CAPACITY WILL BE LIMITING) PERSONNEL HANDLING LOAD = DYNAMIC LOAD DIVIDED BY 2



L/B Bobby Accommodations