

Montco Offshore



P.O. Box 850
17751 Hwy 3235
Galliano, LA 70354
Main Line: 985-325-7157
Fax: 985-325-6795
Toll Free: 877-666-6826

3 Riverway
Suite 100
Houston, TX 77056
Main Line: 281-822-7157
Fax: 281-822-6795
Web Site: www.Montco.com

Wayne Tyler
Vice President of Marketing
Cellular: 985-637-9175
E-mail: Wayne.Tyler@Montco.com

Mark Burke
Vice President of Business Development
Cellular: 985-637-3168
Email: Mark.Burke@Montco.com

Steven Burke
Business Development
Cellular: 832-482-5963
Email: Steven.Burke@Montco.com

L/B CAITLIN CLASS 235'

SELF-ELEVATING VESSEL -- YEAR BUILT - 2009
OFFICIAL NUMBER-1220719 CALL SIGN-WDE6197

DIMENSIONS:

| | |
|--------------------|---------|
| Length (Overall) | 137' |
| Beam (Overall) | 85'-10" |
| Beam (Barge Only) | 77' |
| Depth (Barge Only) | 11' 6" |
| Design Draft | 7' 6" |

HULL CHARACTERISTICS:

| | |
|--------------------|--------------|
| Gross Tonnage | 155 tons |
| Open Deck Area | 6200 sq. ft. |
| Total Usable Space | 7600 sq. ft. |
| Maximum Deck Load | 850,000 lbs. |

LEGS:

| | |
|----------|------------------------------------|
| Number | 3 |
| Length | 235' |
| Size | 66" diameter x 1.5" wall thickness |
| Material | API 5LX-70 KSI Steel |

PADS:

| | |
|---------------|--------------------|
| Length | 34' |
| Width | 18' |
| Depth | 5 6" |
| Configuration | Raked on both ends |

CRANE CAPACITY:

| | |
|-------------|-----------------------|
| Number | 2 (API-2C Certified) |
| Crane 1 | 150 Tons @ 30' |
| Boom Length | 100' Lattice Type |
| Heel Pin | 12' Above Deck |
| Crane 2 | 40 Tons @ 20' |
| Boom Length | (Telescoping) 60'-90' |

PROPULSION:

| | |
|-------------------|-----------------------|
| Main Engines | (2) Catapillar C32 |
| Horsepower/engine | 1000 @ 1800 rpm |
| Reduction Gear | (2) TwinDisc MGX-5321 |
| Propellers | (2) Workboat |
| Bow Thruster | 300 hp Jastrum |

CAPACITIES:

| | |
|-------------------|------------------|
| Fuel | 24,000 gal |
| Potable Water | 23,400 gal |
| Lube Oil | 650 gal |
| Hydraulic Oil | 3,300 gal |
| Submersible Pumps | 2 @ 150 GPM each |

GENERATORS:

| | |
|------------|-------------------|
| Engines | (2) Catapillar C9 |
| Generators | (2) 215 KW |

LIVING QUARTERS:

| | |
|---------------------|------------------------------|
| Berths | Total 42 (10 Crew / 32 PACs) |
| Galley | Ref., Fr., Ice Maker, Range |
| Sanitary Facilities | (16) Heads |
| Laundry | (3) Washer and (3) Dryers |

NAVIGATION EQUIPMENT:

Radar, VHF's, Fathometer, Compass,
Single Sideband, AIS, Auto Pilot, GPS,
Anemometer, Electronic Charting,
GMDSS Station, SSAS, SpeedDoppler

JACKING:

| | |
|---|------|
| Maximum Working Water Depth | 180' |
| Maximum Height of Deck above mud line (Subtract Penetration) | 222' |

SPECIAL FEATURES

Separate VIP Room Facilities,
Zero Discharge Capability,
Marine Sewage Treatment System
Walk-in Cooler & Freezer

ESTIMATED SPEED: 6 Knots

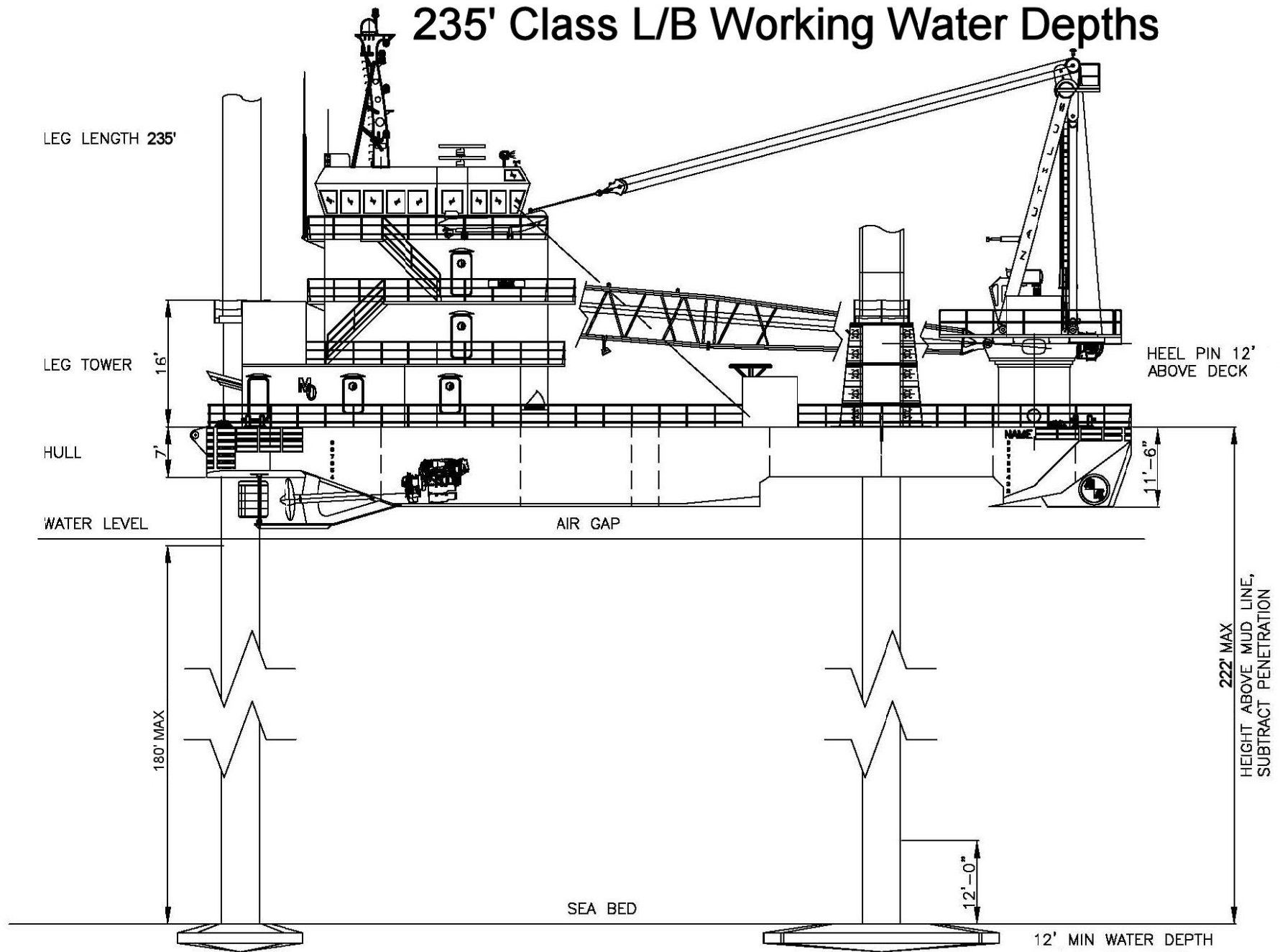
FUEL CONSUMPTION:

| | |
|----------------------|--------------------------|
| Main Engines | 48 gal/hr = 1152 gal/day |
| Generators | 17 gal/hr = 408 gal/day |
| Primary Crane Engine | 24 gal/hr |

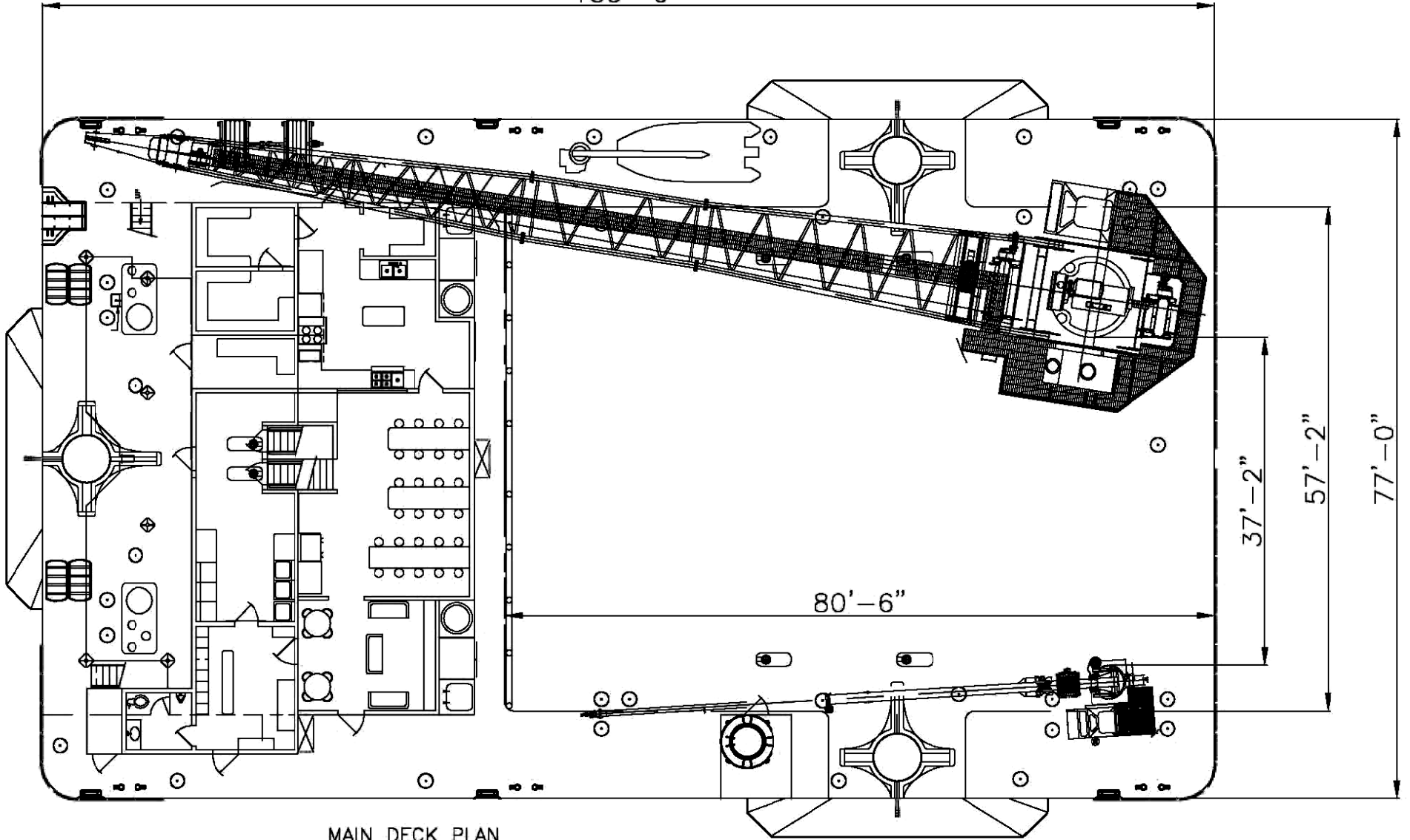
REGULATORY CLASSIFICATION:

USCG - O.S.V., SOLAS/MARPOL,
ABS - Maltese Cross

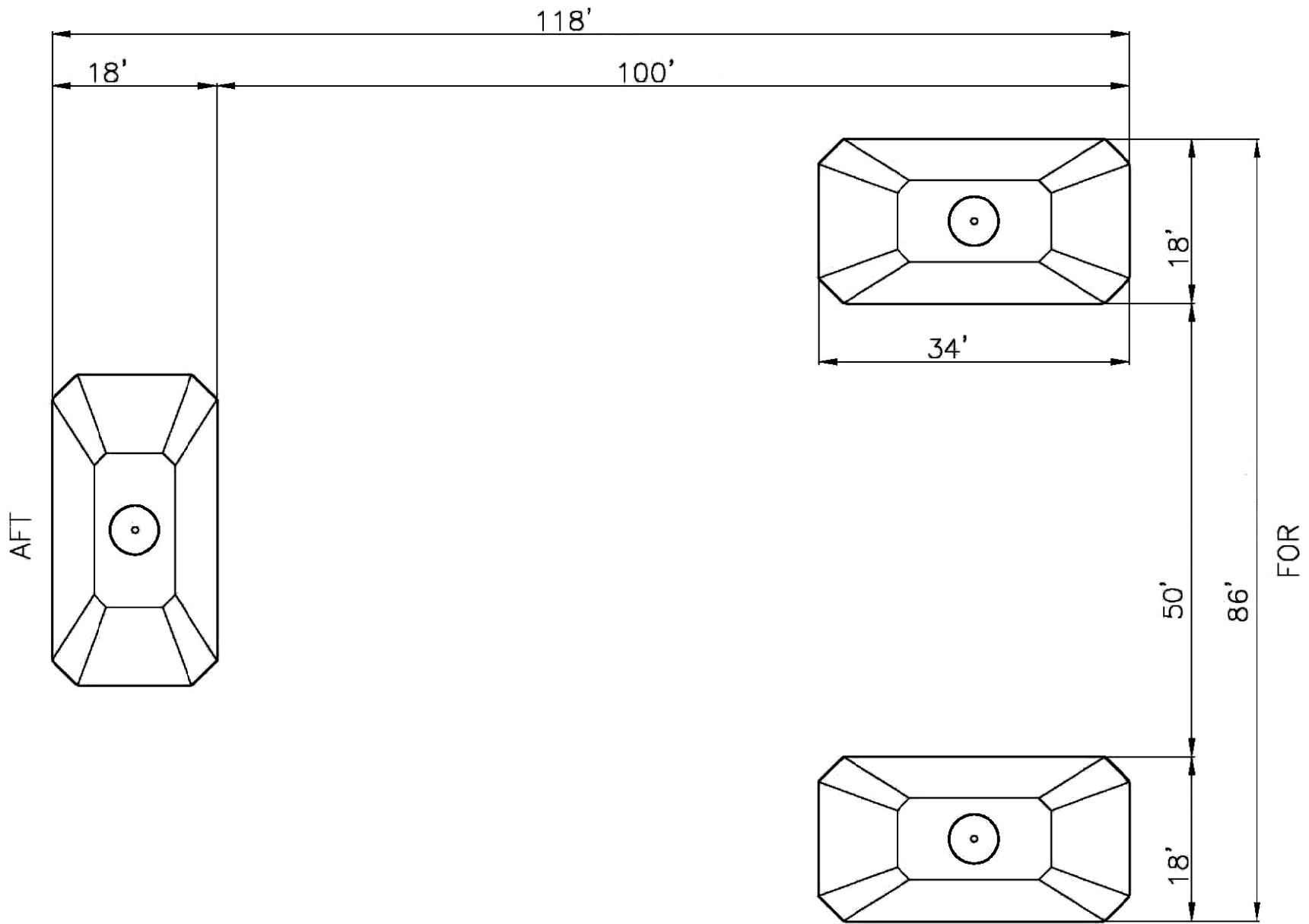
235' Class L/B Working Water Depths



133'-0"



MAIN DECK PLAN



PAD ARRANGEMENT

| | | 60 FOOT BOOM – RETRACTED | | | | | | |
|-------------|------------------|--------------------------|----------------|-----------------------|----------------|---------------------|----------------|-----------------|
| RADIUS (FT) | BOOM ANGLE (DEG) | MAIN HOIST LOW SPEED | | MAIN HOIST HIGH SPEED | | AUXILIARY HOIST | | |
| | | SIX PART REEVING | | SIX PART REEVING | | SINGLE PART REEVING | | |
| | | ONBOARD (lbs) | OFFBOARD (lbs) | ONBOARD (lbs) | OFFBOARD (lbs) | ONBOARD (lbs) | OFFBOARD (lbs) | PERSONNEL (lbs) |
| 8.1 | 83 | 80,000 | 53,333 | 50,880 | 50,880 | 7,669 | 7,669 | 2,154 |
| 10 | 81 | 80,000 | 53,333 | 50,880 | 50,880 | 7,669 | 7,669 | 2,154 |
| 15 | 76 | 70,454 | 46,569 | 50,880 | 46,569 | 7,669 | 7,669 | 2,154 |
| 20 | 71 | 55,543 | 36,629 | 50,880 | 36,629 | 7,669 | 7,669 | 2,154 |
| 25 | 66 | 46,179 | 30,398 | 46,197 | 30,398 | 7,669 | 7,669 | 2,154 |
| 30 | 61 | 38,707 | 25,405 | 38,707 | 25,405 | 7,669 | 7,669 | 2,154 |
| 35 | 55 | 32,522 | 21,281 | 32,522 | 21,281 | 7,669 | 7,669 | 2,154 |
| 40 | 49 | 27,792 | 18,128 | 27,792 | 18,128 | 7,669 | 7,669 | 2,154 |
| 45 | 42 | 24,078 | 15,652 | 24,078 | 15,652 | 7,669 | 7,669 | 2,154 |
| 50 | 34 | 21,078 | 13,652 | 21,078 | 13,652 | 7,669 | 7,669 | 2,154 |
| 55 | 24 | 18,605 | 12,003 | 18,605 | 12,003 | 7,669 | 7,669 | 2,154 |
| 60 | 0 | 16,450 | 10,567 | 16,450 | 10,567 | 7,669 | 7,669 | 2,154 |

| DESIGN CONDITIONS | |
|----------------------------------|-----------------|
| METHOD USED | DEFAULT DYNAMIC |
| HOOK DROP | 205 FT |
| MIN HOOK SPEED (MAIN LOW SPEED) | 18 FPM |
| MIN HOOK SPEED (MAIN HIGH SPEED) | 39 FPM |
| MIN HOOK SPEED (AUX.) | 281 FPM |

| | | 90 FOOT BOOM – EXTENDED | | | | | | |
|-------------|------------------|-------------------------|----------------|-----------------------|----------------|---------------------|----------------|-----------------|
| RADIUS (FT) | BOOM ANGLE (DEG) | MAIN HOIST LOW SPEED | | MAIN HOIST HIGH SPEED | | AUXILIARY HOIST | | |
| | | SIX PART REEVING | | SIX PART REEVING | | SINGLE PART REEVING | | |
| | | ONBOARD (lbs) | OFFBOARD (lbs) | ONBOARD (lbs) | OFFBOARD (lbs) | ONBOARD (lbs) | OFFBOARD (lbs) | PERSONNEL (lbs) |
| 12 | 83 | 49,064 | 32,309 | 49,064 | 32,309 | 7,669 | 7,669 | 2,154 |
| 15 | 81 | 47,600 | 31,333 | 49,306 | 32,471 | 7,669 | 7,669 | 2,154 |
| 20 | 77 | 45,160 | 29,707 | 49,825 | 32,817 | 7,669 | 7,669 | 2,154 |
| 25 | 74 | 42,717 | 28,078 | 42,717 | 28,078 | 7,669 | 7,669 | 2,154 |
| 30 | 71 | 35,474 | 23,249 | 35,474 | 23,249 | 7,669 | 7,669 | 2,154 |
| 35 | 67 | 30,021 | 19,614 | 30,021 | 19,614 | 7,669 | 7,669 | 2,154 |
| 40 | 64 | 25,832 | 16,821 | 25,832 | 16,821 | 7,669 | 7,669 | 2,154 |
| 45 | 60 | 22,513 | 14,609 | 22,513 | 14,609 | 7,669 | 7,669 | 2,154 |
| 50 | 57 | 19,808 | 12,805 | 19,808 | 12,805 | 7,669 | 7,669 | 2,154 |
| 55 | 53 | 17,577 | 11,318 | 17,577 | 11,318 | 7,669 | 7,669 | 2,154 |
| 60 | 49 | 15,700 | 10,067 | 15,700 | 10,067 | 7,669 | 7,669 | 2,154 |
| 65 | 44 | 14,098 | 8,999 | 14,098 | 8,999 | 7,669 | 7,669 | 2,154 |
| 70 | 39 | 12,707 | 8,071 | 12,707 | 8,071 | 7,669 | 7,669 | 2,154 |
| 75 | 34 | 11,501 | 7,267 | 11,501 | 7,267 | 7,669 | 7,669 | 2,154 |
| 80 | 28 | 10,441 | 6,561 | 10,441 | 6,561 | 7,669 | 7,551 | 2,154 |
| 85 | 20 | 9,495 | 5,930 | 9,495 | 5,930 | 7,669 | 6,920 | 2,154 |
| 90 | 0 | 8,664 | 5,376 | 8,664 | 5,376 | 7,669 | 6,366 | 1,982 |

NOTE:

- 1) OFFBOARD LIFTS BASED ON SWL*Cv
- 2) Cv IS THE VERTICAL DYNAMIC COEFFICIENT DETERMINED BY THREE METHODS
 - * VESSEL SPECIFIC METHOD – USED FOR DETERMINING RATINGS FOR FLOATING PLATFORM / VESSEL
 - * GENERAL METHOD – USED FOR DETERMINING RATINGS FOR FLOATING PLATFORM / VESSEL OR FIXED PLATFORM
 - * DEFAULT DYNAMIC METHOD – OFFBOARD LIFTS FROM FIXED PLATFORM (Cv=2.0)
- 3) SHEAVE EFFICIENCY CONSIDERED.
- 4) THE ABOVE RATINGS ARE NET RATINGS AS THE MAIN LOAD BLOCK WEIGHT OF 1200 LBS. AND THE AUXILIARY OVERHAUL BALL WEIGHT OF 210 LBS. HAVE ALREADY BEEN SUBTRACTED TO DETERMINE "NET" CAPACITY.
- 5) REFERENCE MANUAL FOR REEVING DIAGRAMS.
- 6) REFERENCE INFORMATION CHART FOR REEVING DETAILS.
- 7) ALL RATINGS IN ACCORDANCE WITH API SPECIFICATION 2C (SPEC 2C), SIXTH EDITION, SEPTEMBER 2004.



MARINE CRANES
HOUMA, LOUISIANA 70363
(985) 868-0630

LIFTING LOAD CAPACITY CHART
NAUTILUS MODEL 1100L-100 MARINE CRANE



| RADIUS (FT) | BOOM ANGLE (DEG) | MAIN HOIST | | AUXILIARY HOIST | | |
|----------------|------------------------|------------------|-------------------|------------------|-------------------|--------------------|
| | | 12 PART REEVING | | 2 PART REEVING | | PERSONNEL (lbs) |
| | | ONBOARD (lbs) | OFFBOARD (lbs) | ONBOARD (lbs) | OFFBOARD (lbs) | |
| 24 | 81 | 330,000 | 220,000 | 22,211 | 20,000 | 8,654 |
| 25 | 80 | 330,000 | 220,000 | 22,211 | 20,000 | 8,654 |
| 30 | 77 | 300,280 | 198,196 | 22,211 | 20,000 | 8,654 |
| 35 | 74 | 256,816 | 169,210 | 22,211 | 20,000 | 8,654 |
| 40 | 71 | 223,532 | 147,021 | 22,211 | 20,000 | 8,654 |
| 45 | 68 | 197,232 | 129,488 | 22,211 | 20,000 | 8,654 |
| 50 | 65 | 175,930 | 115,286 | 22,211 | 20,000 | 8,654 |
| 55 | 62 | 158,326 | 103,550 | 22,211 | 20,000 | 8,654 |
| 60 | 59 | 143,686 | 93,790 | 22,211 | 20,000 | 8,654 |
| 65 | 55 | 131,071 | 85,380 | 22,211 | 20,000 | 8,654 |
| 70 | 52 | 120,193 | 78,128 | 22,211 | 20,000 | 8,654 |
| 75 | 48 | 110,714 | 71,809 | 22,211 | 20,000 | 8,654 |
| 80 | 44 | 102,380 | 66,253 | 22,211 | 20,000 | 8,654 |
| 85 | 39 | 94,995 | 61,330 | 22,211 | 20,000 | 8,654 |
| 90 | 35 | 88,309 | 56,872 | 22,211 | 20,000 | 8,654 |
| 95 | 29 | 82,398 | 52,932 | 22,211 | 20,000 | 8,654 |
| 100 | 22 | 77,055 | 49,370 | 22,211 | 20,000 | 8,654 |
| 105 | 12 | 72,191 | 46,127 | 22,211 | 20,000 | 8,654 |
| 106 | 0 | 70,297 | 44,864 | 22,211 | 20,000 | 8,654 |

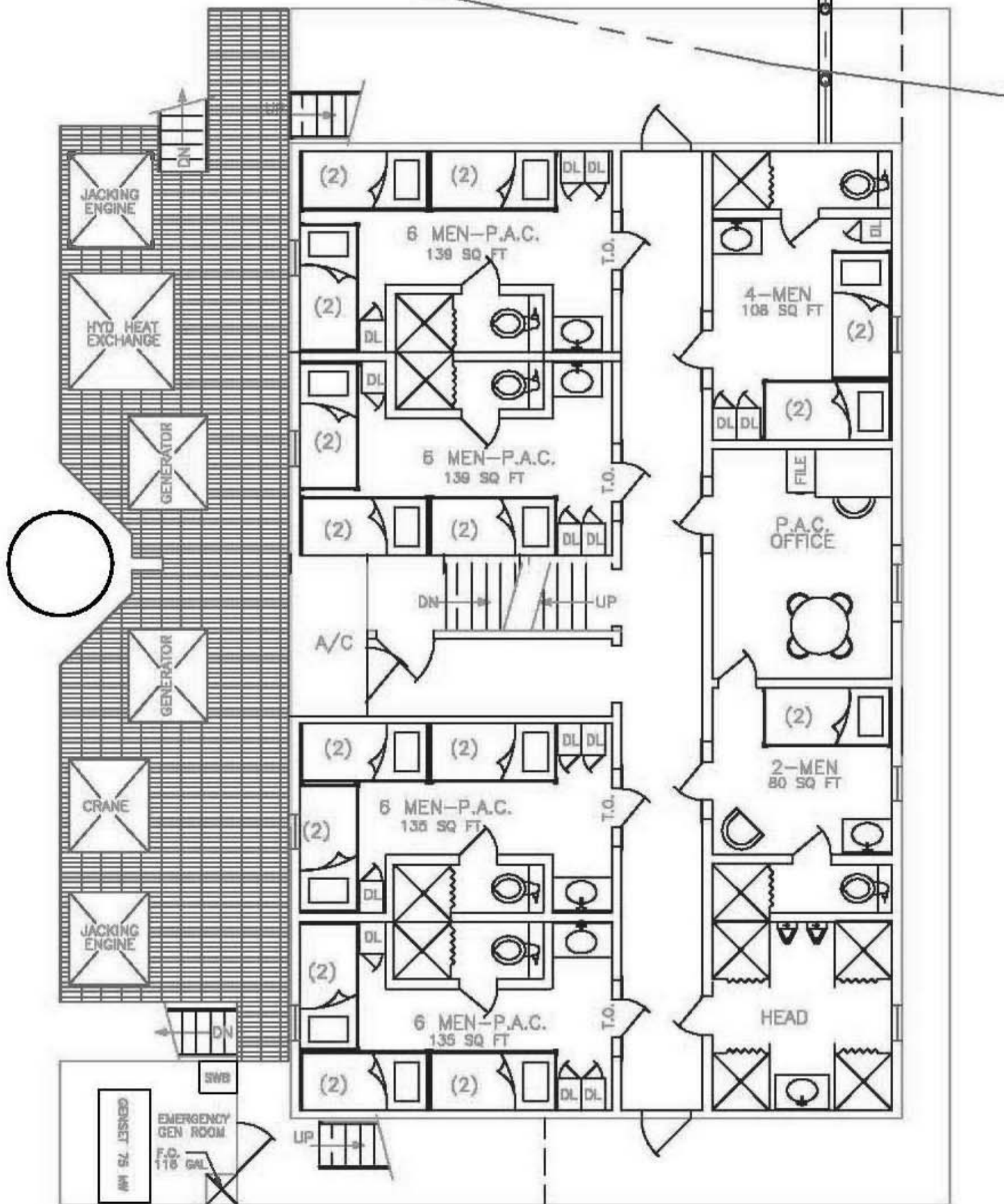
NOTE:

- 1) OFFBOARD LIFTS BASED ON SWL*Cv
- 2) Cv IS THE VERTICAL DYNAMIC COEFFICIENT DETERMINED BY THREE METHODS
 - * VESSEL SPECIFIC METHOD - USED FOR DETERMINING RATINGS FOR FLOATING PLATFORM / VESSEL
 - * GENERAL METHOD - USED FOR DETERMINING RATINGS FOR FLOATING PLATFORM / VESSEL OR FIXED PLATFORM
 - * DEFAULT DYNAMIC METHOD - OFFBOARD LIFTS FROM FIXED PLATFORM (Cv=2.0)
- 3) SHEAVE EFFICIENCY CONSIDERED.
- 4) THE ABOVE RATINGS ARE NET RATINGS AS THE MAIN LOAD BLOCK WEIGHT OF 6000 LBS. AND THE AUXILIARY LOAD BLOCK WEIGHT OF 390 LBS. HAVE ALREADY BEEN SUBTRACTED TO DETERMINE "NET" CAPACITY.
- 5) REFERENCE MANUAL FOR REEVING DIAGRAMS.
- 6) REFERENCE INFORMATION CHART FOR REEVING DETAILS.
- 7) ALL RATINGS IN ACCORDANCE WITH API SPECIFICATION 2C (SPEC 2C), SIXTH EDITION, SEPTEMBER 2004.

CRANE S/N: 21607C

LOCATION: LIFTBOAT MOTOR VESSEL

REV: B
P/N: N2007SK3-062



JACKING ENGINE

HYD HEAT EXCHANGE

GENERATOR

GENERATOR

CRANE

JACKING ENGINE

GENERATOR 75 KW

EMERGENCY GEN ROOM
F.O. 118 GAL

(2)

6 MEN-P.A.C.
139 SQ FT

(2)

(2)

5 MEN-P.A.C.
139 SQ FT

(2)

(2)

6 MEN-P.A.C.
135 SQ FT

(2)

(2)

6 MEN-P.A.C.
135 SQ FT

(2)

4-MEN
108 SQ FT

P.A.C. OFFICE

2-MEN
80 SQ FT

HEAD

DN

DN

UP

DN

UP

T.O.

T.O.

T.O.

T.O.

DL DL

DL

DL

DL DL

DL DL

DL

DL DL

DL

DL DL

DL

DL

DL

DL

DL

DL

DL

DL

DL

FILE

Chair

Chair

Chair

Chair

