

# Montco Offshore



**P.O. Box 850**  
**17751 Hwy 3235**  
**Galliano, LA 70354**  
**Main Line: 985-325-7157**  
**Fax: 985-325-6795**  
**Toll Free: 877-666-6826**

**3 Riverway**  
**Suite 100**  
**Houston, TX 77056**  
**Main Line: 281-822-7157**  
**Fax: 281-822-6795**  
**Web Site: [www.Montco.com](http://www.Montco.com)**

**Wayne Tyler**  
Vice President of Marketing  
Cellular: 985-637-9175  
E-mail: [Wayne.Tyler@Montco.com](mailto:Wayne.Tyler@Montco.com)

**Mark Burke**  
Vice President of Business Development  
Cellular: 985-637-3168  
Email: [Mark.Burke@Montco.com](mailto:Mark.Burke@Montco.com)

**Steven Burke**  
Business Development  
Cellular: 832-482-5963  
Email: [Steven.Burke@Montco.com](mailto:Steven.Burke@Montco.com)

## L/B CHRISTIE CLASS 145'

SELF-ELEVATING VESSEL -- YEAR BUILT - 1993

OFFICIAL NUMBER - D968587-- CALL SIGN - WCO8966

### DIMENSIONS:

Length (Overall)	91'
Beam (Overall)	65'
Beam (Barge Only)	51.65'
Depth (Barge Only)	8'
Design Draft	6'

### HULL CHARACTERISTICS:

Gross Tonnage	Under 200
Open Deck Area	1,850 sq. ft.
Total Usable Space	2,600 sq. ft.
Maximum Deck Load	315,000 lbs.

### LEGS:

Number	3
Length	145'
Size	42" diameter x 0.718" wall thickness
Material	API SLX-70 KSI Steel

### PADS:

Length	24
Width	12'
Depth	2'
Configuration	Raked on both ends

### CRANE CAPACITY:

Number	2 (API-2C Certified)
Crane 1	50 Tons @ 10'
Boom Length	(Telescoping) 50'-100'
Crane 2	15 Tons @ 10'
Boom Length	(Telescoping) 30'-60'

### PROPULSION:

Main Engines	(2) Detroit Diesel 12V-71N
Horsepower/engine	365 @ 1800 rpm
Reduction Gear	Twin Disc MG-514 4.5:1

### CAPACITIES:

Fuel	7,114 gal
Potable Water	9,800 gal
Lube Oil	150 gal
Hydraulic Oil	1,300 gal
Submersible Pumps	2 @ 150 GPM each

### GENERATORS:

Engines	(2) Detroit Diesel 6-71
Generators	(2) 75 KW Kato

### LIVING QUARTERS:

Berths	Total 30 (9 Crew / 21 PACs)
Galley	Ref., Fr., Ice Maker, Range
Sanitary Facilities	(4) Heads
Laundry	(1) Washer and (2) Dryers

### NAVIGATION EQUIPMENT:

Radar, VHF's, Fathometer, Compass,  
Single Sideband, AIS, Auto Pilot, GPS,  
Anemometer, Electronic Charting,

### JACKING:

Maximum Working Water Depth	100'
Maximum Height of Deck above mud line (Subtract Penetration)	128'

### SPECIAL FEATURES

Separate VIP Room Facilities,  
Zero Discharge Capability,  
Marine Sewage Treatment System

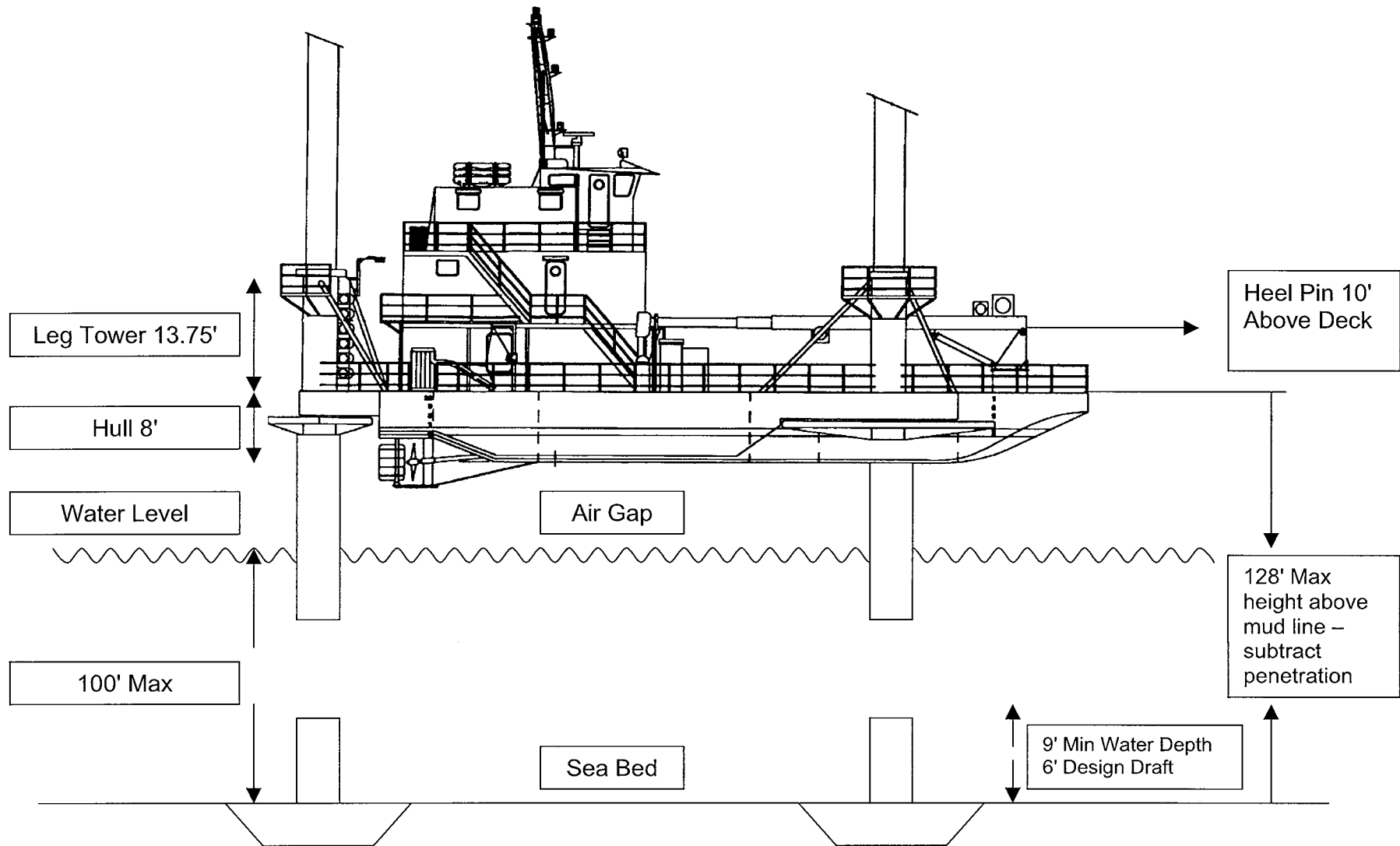
**ESTIMATED SPEED:** 6 Knots

### FUEL CONSUMPTION:

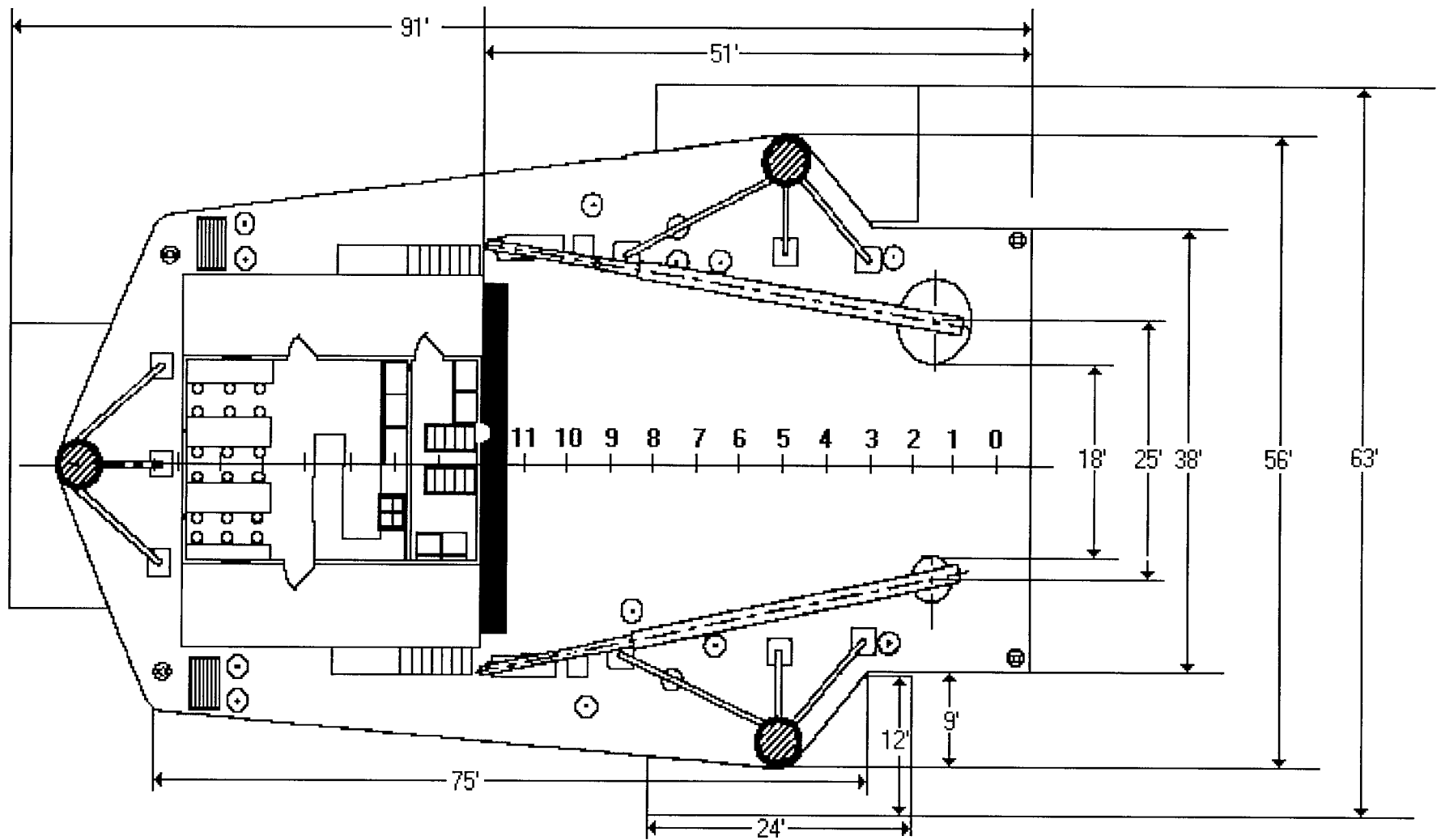
Main Engines	50 gal/day = 1200 gal/day
Generators	4 gal/day = 108 gal/day
Crane Engine	5 gal/hr

### REGULATORY CLASSIFICATION:

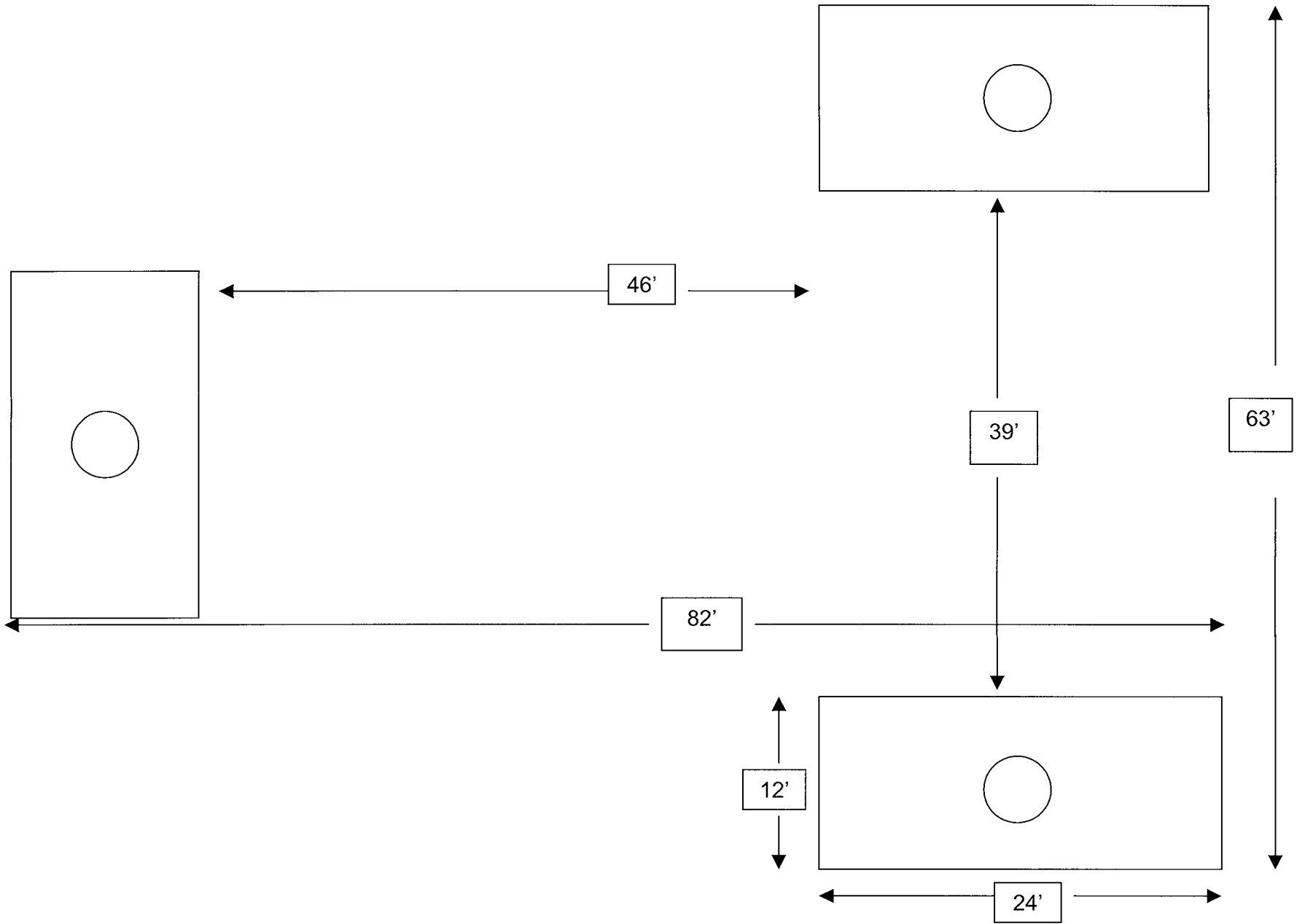
USCG O.S.V., ABS Load Line



**L/B Christie 145' Class**



**L/B Christie Deck Layout**



**L/B Christie (Distance between leg pads)**

# LOAD CHART (STATIC)

MAIN HOIST = 830' OF 6 x 25 IWRC-EIPS

AUX HOIST = 350' OF 19 x 7 IWRC-EIPS

EBI CRANES  
TC 100  
54' - 100' BOOM

MONTCO OFFSHORE, INC  
L/B BOBBY  
L/B CHRISTIE

MAIN HOIST - FIVE PART LINE					AUX. HOIST - 1 PART LINE	
FULLY RETRACTED			FULLY EXTENDED		FULLY EXTENDED	
RADIUS OF LOAD (FT)	CAPACITY (POUNDS)	BOOM ANGLE (DEGREES)	CAPACITY (POUNDS)	BOOM ANGLE (DEGREES)	CAPACITY (POUNDS)	BOOM ANGLE (DEGREES)
10	100,000	79	-	-	-	-
15	75,000	74	60,000	82	5000	82
20	57,000	68	51,000	79	5000	79
25	47,000	62	40,000	76	5000	76
30	40,100	56	33,000	73	5000	73
35	35,000	49	28,000	70	5000	70
40	31,000	42	23,000	66	5000	66
45	28,000	33	20,000	63	5000	63
50	25,000	22	18,000	60	5000	60
55	19,000	0	16,000	57	5000	57
60	-	-	15,000	53	5000	53
65	-	-	13,000	49	5000	49
70	-	-	12,000	45	5000	45
75	-	-	11,000	41	5000	41
80	-	-	10,000	37	5000	37
85	-	-	9,000	32	5000	32
90	-	-	8,000	26	5000	26
95	-	-	7,000	18	5000	18
100	-	-	4,500	0	4500	0

STATIC LOAD = DYNAMIC LOAD X 1.5 (NOTE: WINCH CAPACITY WILL BE LIMITING) PERSONNEL HANDLING LOAD = DYNAMIC LOAD DIVIDED BY 2

# LOAD CHART (STATIC)

MAIN HOIST = 420' OF 3/4 19 x 7 IWRC-EIPS

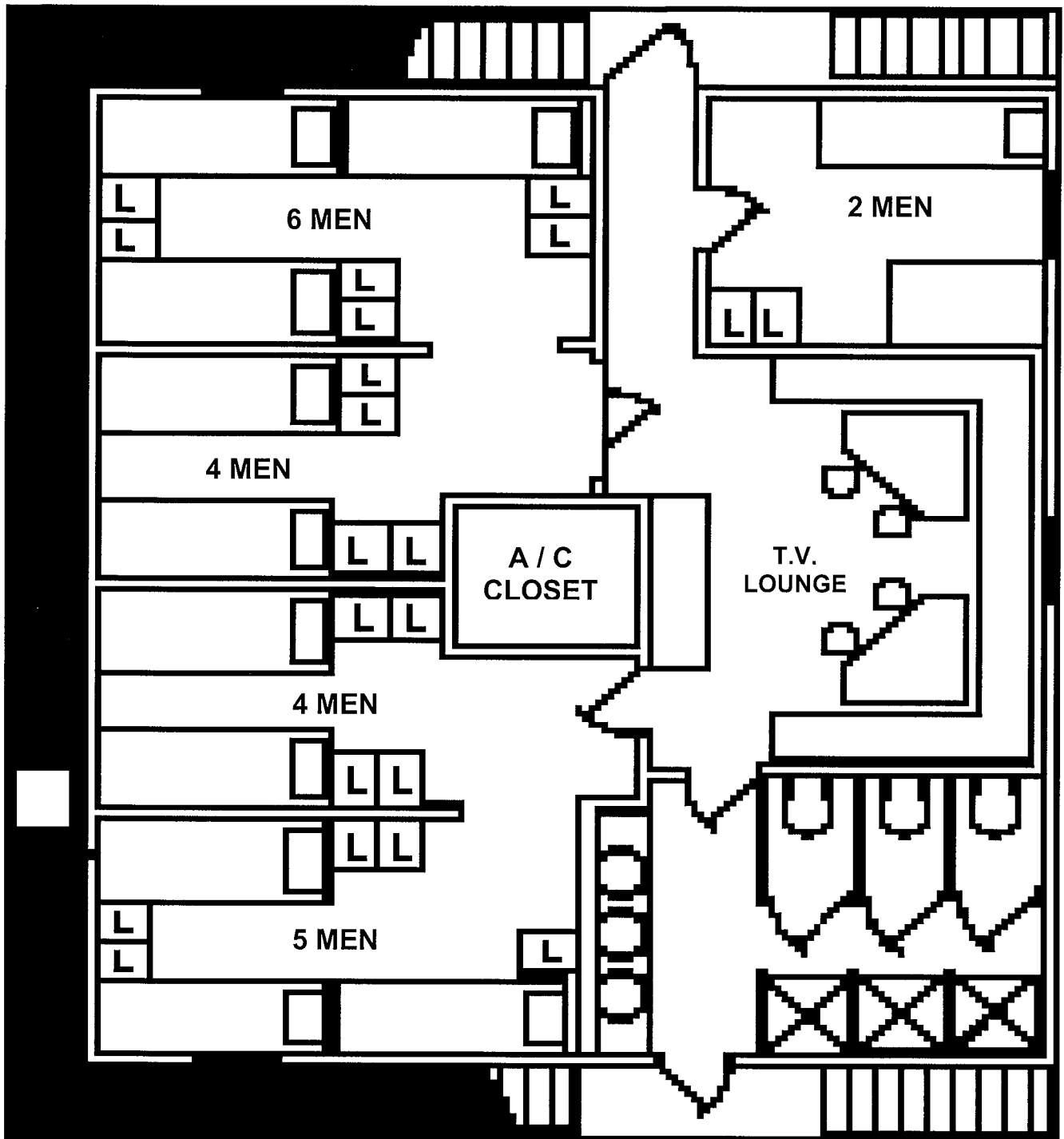
AUX HOIST = 300' OF 9/16 19 x 7 IWRC-EIPS

EBI CRANES  
TC 30  
34' - 60' BOOM

MONTCO OFFSHORE, INC  
L/B BOBBY  
L/B CHRISTIE

MAIN HOIST - THREE PART LINE					AUX. HOIST - 1 PART LINE	
FULLY RETRACTED			FULLY EXTENDED		FULLY EXTENDED	
RADIUS OF LOAD (FT)	CAPACITY (POUNDS)	BOOM ANGLE (DEGREES)	CAPACITY (POUNDS)	BOOM ANGLE (DEGREES)	CAPACITY (POUNDS)	BOOM ANGLE (DEGREES)
10	30,000	72	28,000	80	5,000	80
15	22,000	63	19,000	75	5,000	75
20	16,500	52	14,500	70	5,000	70
25	13,000	40	12,000	65	5,000	65
30	10,000	24	10,000	60	5,000	60
35	6,000	3	8,500	54	5,000	54
40	-	-	7,000	48	5,000	48
45	-	-	6,000	41	5,000	41
50	-	-	5,000	33	5,000	33
55	-	-	4,300	23	4,300	23
60	-	-	2,500	3	2,500	3

STATIC LOAD = DYNAMIC LOAD X 1.5 (NOTE: WINCH CAPACITY WILL BE LIMITING) PERSONNEL HANDLING LOAD = DYNAMIC LOAD DIVIDED BY 2



**L/B Christie Accommodations**