

Montco Offshore



P.O. Box 850
17751 Hwy 3235
Galliano, LA 70354
Main Line: 985-325-7157
Fax: 985-325-6795
Toll Free: 877-666-6826

3 Riverway
Suite 100
Houston, TX 77056
Main Line: 281-822-7157
Fax: 281-822-6795
Web Site: www.Montco.com

Wayne Tyler
Vice President of Marketing
Cellular: 985-637-9175
E-mail: Wayne.Tyler@Montco.com

Mark Burke
Vice President of Business Development
Cellular: 985-637-3168
Email: Mark.Burke@Montco.com

Steven Burke
Business Development
Cellular: 832-482-5963
Email: Steven.Burke@Montco.com



Montco Offshore, Inc.
17751 Hwy 3235
Post Office Box 850
Galliano, LA 70354
Phone: (985) 325-7157
Fax: (985) 325-6795

L/B JUAN CLASS 200'

SELF-ELEVATING VESSEL -- YEAR BUILT - 1997
OFFICIAL NUMBER – 1052392 -- CALL SIGN – WDC2334

DIMENSIONS:

Length (Overall)	131'
Beam (Overall)	77'
Beam (Barge Only)	69'
Depth (Barge Only)	10'
Design Draft	7'

HULL CHARACTERISTICS:

Gross Tonnage (US Regulatory)	Under 200
Open Deck Area	3,500 sq. ft.
Total Usable Space	6,000 sq. ft.
Maximum Deck Load	505,000 lbs.

LEGS:

Number	3
Length	200'
Size	52" diameter x 1.5" wall thickness
Material	API 5LX-70 KSI Steel

PADS:

Length	28'
Width	13' 9"
Depth	3'
Configuration	Raked on both ends

CRANE CAPACITY:

Number	2(API-2C Certified)
Primary Crane	100 Tons @ 30' radius
Boom Length	90' lattice type
Heel Pin	11' Above Deck
Auxiliary Crane	20 Tons @ 10' radius
Boom Length	(Telescoping) 50'-70'

PROPULSION:

Main Engines	(2) Caterpillar 3508
Horsepower/engine	855 @ 1800 rpm
Reduction Gear	Twin Disc MG-530 5:1

CAPACITIES:

Fuel	10,300 gal
Potable Water	10,280 gal
Lube Oil	350 gal
Hydraulic Oil	525 gal
Submersible Pumps	2 @ 150 GPM each

GENERATORS:

Engines	(2) Caterpillar 3306
Generators	(2) 95 KW

LIVING QUARTERS:

Berths	Total 36 (11 Crew / 25 PACs)
Galley	Ref., Fr., Ice Maker, Range
Sanitary Facilities	(6) Heads
Laundry	(2) Washers and (2) Dryers

NAVIGATION EQUIPMENT:

Radar, VHF's, Fathometer, Compass,
Single Sideband, AIS, Auto Pilot, GPS,
Anemometer, Electronic Charting,

JACKING:

Maximum Working Water Depth	150'
Maximum Height of Deck above mud line (Subtract Penetration)	186'

SPECIAL FEATURES:

Separate VIP Room Facilities,
Zero Discharge Capability,
Marine Sewage Treatment System

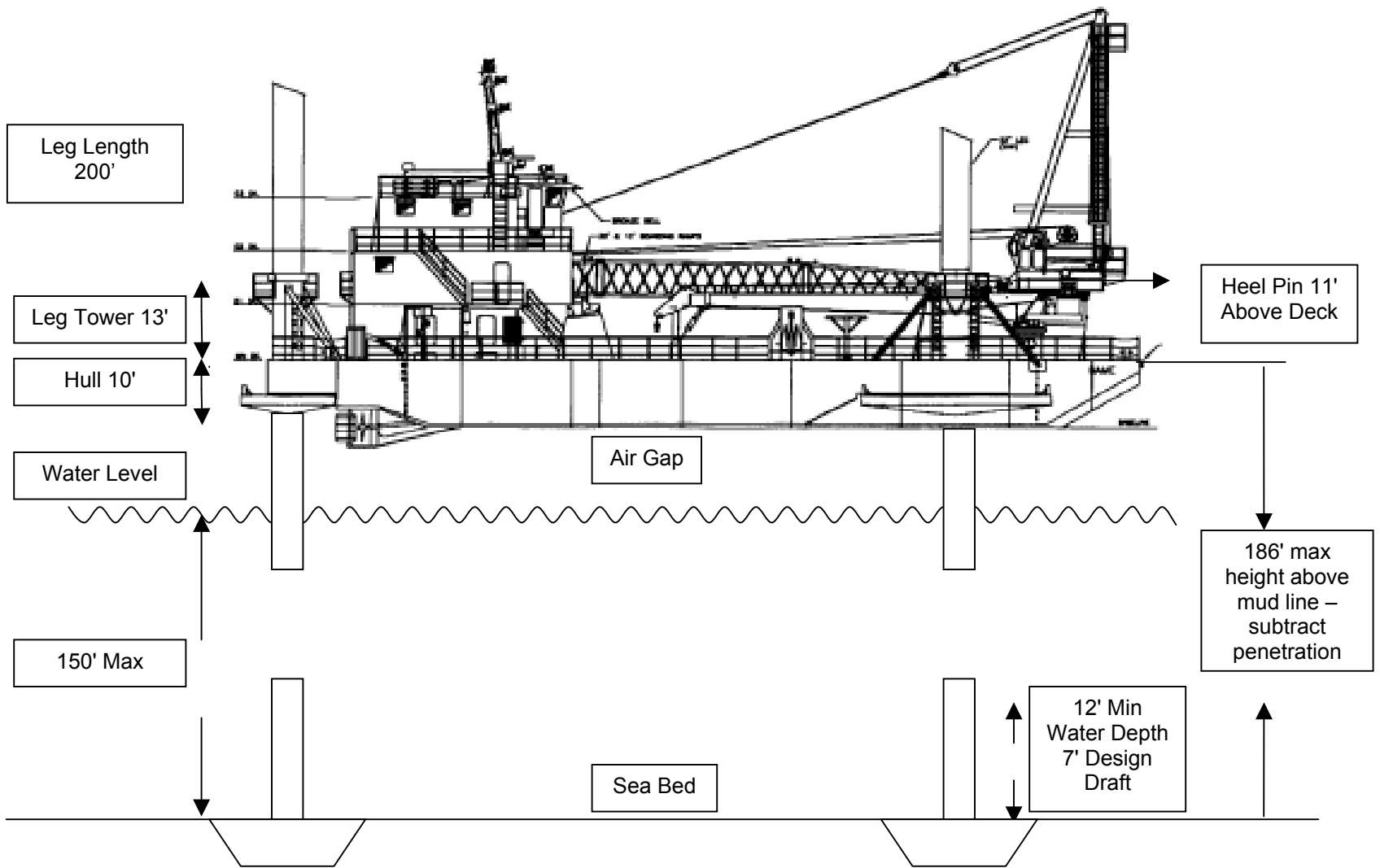
ESTIMATED SPEED: 6 Knots

FUEL CONSUMPTION:

Main Engines	72.5 gal/hr = 1740 gal/day
Generators	4 gal/hr = 108 gal/day
Crane Engine	3-7 gal/hr

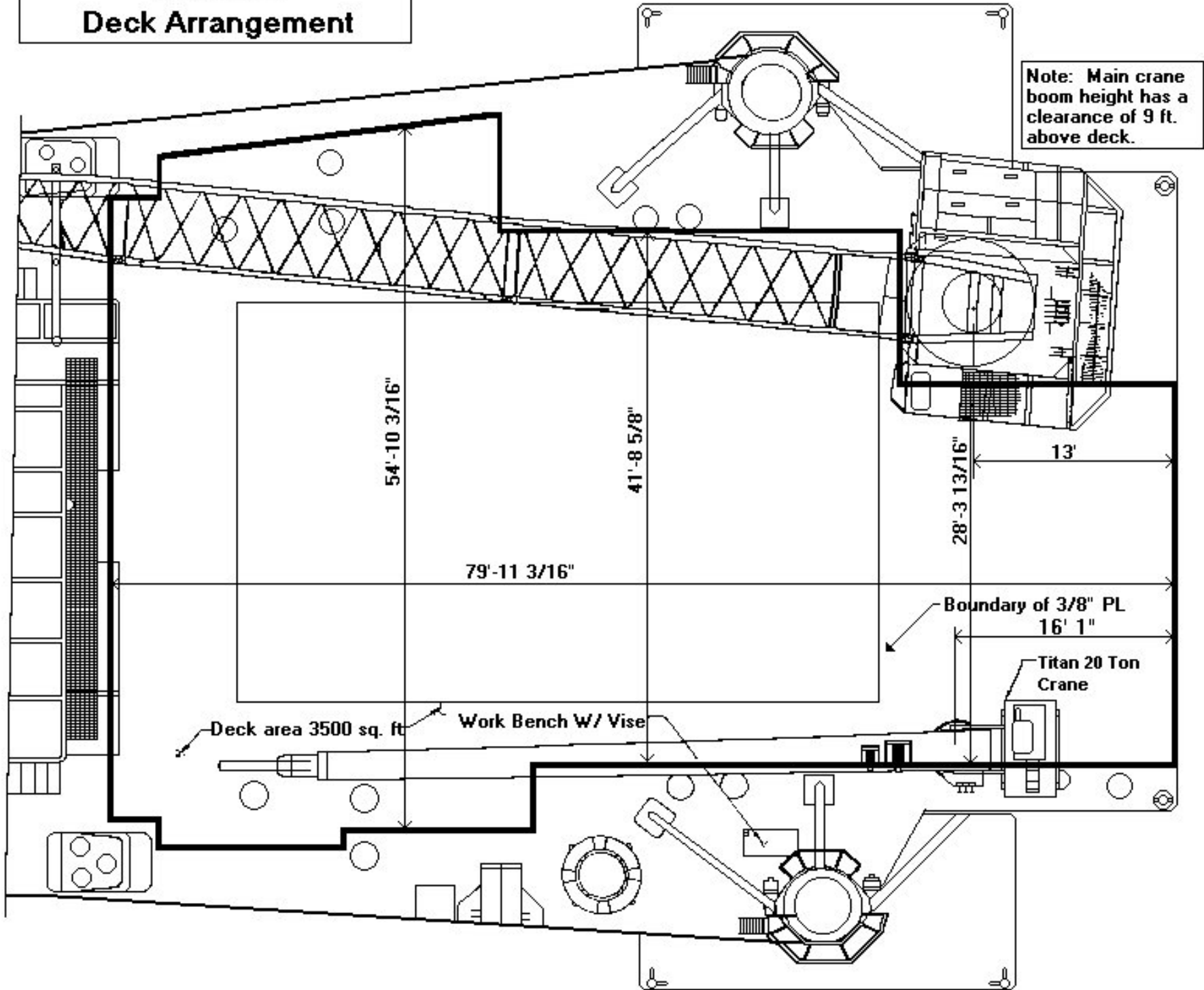
REGULATORY CLASSIFICATION:

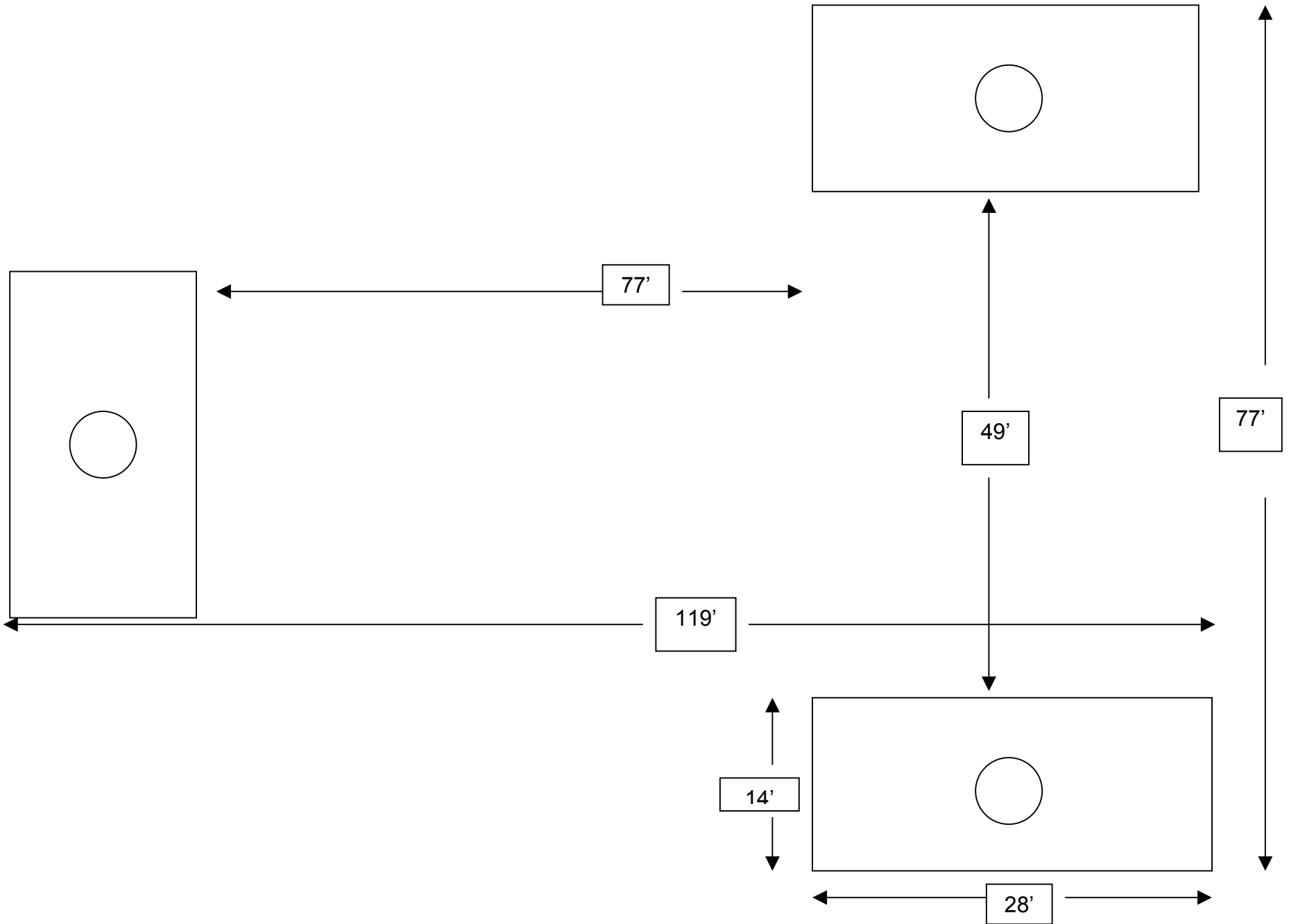
USCG O.S.V., ABS Load Line



L/B Juan 200' Class

L/B Juan Deck Arrangement





L/B Juan (Distance between leg pads)

LOAD CHART

TITAN T20T

52'-72' TELESCOPIC BOOM
S/N: 217-8179-52-72D

L/B JUAN

Main hoist = CH185A-36120-02-1 w/925'x3/4" Dyform-18 HSLR Wire Rope
Auxiliary Hoist = PD12C-21064-02-1 w/ 300'x1/2" Dyform 18 HSLR Wire Rope
One 6" x 240" Telescopic Cylinder @ 2,850 PSI
Two 10" Luffing Cylinders @ 1,800 PSI MAX

LOAD RADIUS (FT.)	52' RETRACTED BOOM					72' EXTENDED BOOM				
	BOOM ANGLE (DEG.)	MAIN HOIST 4 PART REEVING		AUXILIARY HOIST 1 PART REEVING		BOOM ANGLE (DEG.)	MAIN HOIST 4 PART REEVING		AUXILIARY HOIST 1 PART REEVING	
		STATIC	DYNAMIC	STATIC	DYNAMIC		STATIC	DYNAMIC	STATIC	DYNAMIC
		CAPACITY (LBS.)	CAPACITY (LBS.)	CAPACITY (LBS.)	CAPACITY (LBS.)		CAPACITY (LBS.)	CAPACITY (LBS.)	CAPACITY (LBS.)	CAPACITY (LBS.)
15	74	46,395	30,565	5,490	5,490	78	44,330	29,185	5,490	5,490
20	68	36,270	23,815	5,490	5,490	74	34,275	22,485	5,490	5,490
25	62	29,815	19,510	5,490	5,490	70	27,930	18,255	5,490	5,490
30	56	25,275	16,485	5,490	5,490	66	23,530	15,320	5,490	5,490
35	49	21,825	14,185	5,490	5,490	61	20,280	13,155	5,490	5,490
40	41	19,000	12,300	5,490	5,490	57	17,755	11,470	5,490	5,490
45	31	16,440	10,595	5,490	5,490	52	15,720	10,115	5,490	5,490
50	17	13,430	8,585	5,490	5,490	47	14,010	8,975	5,490	5,490
52	0	9,455	5,935	5,490	5,490	*	*	*	*	*
55	*	*	*	*	*	41	12,515	7,975	5,490	5,490
60	*	*	*	*	*	34	11,130	7,055	5,490	5,490
65	*	*	*	*	*	26	9,730	6,120	5,490	5,490
70	*	*	*	*	*	15	7,890	4,895	5,490	4,895
72	*	*	*	*	*	0	5,395	3,230	5,395	3,230

Reeved capacities shown above include weight of hook & block. Hook and block weight = 1,100 LBS.
Dynamic Capacities Calculated with a Coefficient (Cb) = 2.0.
Use static capacities for lifting from or landing on the STATIONARY jack-up when on bottom or dead calm waters.
use dynamic capacities for lifting from or landing on free-floating vessels.

WARNING

OPERATION OF THIS CRANE BY UNQUALIFIED PERSONNEL IS STRICTLY PROHIBITED

LOAD CHART

**TITAN 16000HC
90' BOOM
S/N216-8178-90D**

BLOCK WEIGHT = 3,000 LBS

L/B JUAN

BOOM ANGLE (degree)	RADIUS OF LOAD (feet)	STRUCTURAL RATING		MAIN HOIST(8-PART)		MAIN HOIST(4-PART)		AUXILIARY HOIST	
		STATIC (pounds)	DYNAMIC (pounds)	STATIC (pounds)	DYNAMIC (pounds)	STATIC (pounds)	DYNAMIC (pounds)	STATIC (pounds)	DYNAMIC (pounds)
82	MIN.	198,725	132,485	195,725	129,485	100,500	100,500	11,000	11,000
79	25	195,475	130,315	192,475	127,315	100,500	100,500	11,000	11,000
76	30	192,905	128,600	189,905	125,600	100,500	100,500	11,000	11,000
72	35	190,860	127,240	187,860	124,240	100,500	100,500	11,000	11,000
69	40	169,835	113,225	166,835	110,225	100,500	100,500	11,000	11,000
65	45	150,960	100,640	147,960	97,640	100,500	97,640	11,000	11,000
62	50	135,690	90,460	132,690	87,460	100,500	87,460	11,000	11,000
58	55	123,080	82,055	120,080	79,055	100,500	79,055	11,000	11,000
54	60	112,490	74,995	109,490	71,995	100,500	71,995	11,000	11,000
50	65	103,470	68,980	100,470	65,980	100,470	65,980	11,000	11,000
46	70	95,690	63,795	92,690	60,795	92,690	60,795	11,000	11,000
41	75	88,915	59,275	85,915	56,275	85,915	56,275	11,000	11,000
36	80	82,955	55,305	79,955	52,305	79,955	52,305	11,000	11,000
30	85	77,670	51,780	74,670	48,780	74,670	48,780	11,000	11,000
22	90	72,950	48,635	69,950	45,635	69,950	45,635	11,000	11,000
10	95	68,690	45,795	65,690	42,795	65,690	42,795	11,000	11,000
HORIZ.	MAX	65,185	43,460	62,185	40,460	62,185	40,460	11,000	11,000

CAPACITIES SHOWN ABOVE INCLUDE THE WEIGHT OF HOOK & BLOCK.
 DYNAMIC CAPACITIES CALCULATED WITH A DYNAMIC COEFFICIENT (Cb) = 2.0
 USE STATIC CAPACITIES FOR LIFTING FROM OR LANDING ON THE PLATFORM.
 USE DYNAMIC CAPACITIES FOR LIFTING FROM OR LANDING ON FLOATING VESSELS.
 MAIN HOIST = CH400A-SPL-99120-21-1 W/ 1,650' OF 1&1/8" DYFORM-18HSLR WIRE ROPE
 AUXILIARY HOIST = CH150A-23120-01-1 W/ 310' OF 3/4" DYFORM-18 HSLR WIRE ROPE
 BOOM HOIST = CH240A-53120-01-1 W/ 1,055' OF 7/8" 6 X 19 EEIPS-IWRC

WARNING

OPERATION OF THIS CRANE BY UNQUALIFIED PERSONNEL IS STRICTLY PROHIBITED

TITAN INDUSTRIES, INC

