

Montco Offshore



P.O. Box 850
17751 Hwy 3235
Galliano, LA 70354
Main Line: 985-325-7157
Fax: 985-325-6795
Toll Free: 877-666-6826

3 Riverway
Suite 100
Houston, TX 77056
Main Line: 281-822-7157
Fax: 281-822-6795
Web Site: www.Montco.com

Wayne Tyler
Vice President of Marketing
Cellular: 985-637-9175
E-mail: Wayne.Tyler@Montco.com

Mark Burke
Vice President of Business Development
Cellular: 985-637-3168
Email: Mark.Burke@Montco.com

Steven Burke
Business Development
Cellular: 832-482-5963
Email: Steven.Burke@Montco.com



**MONTCO
OFFSHORE, INC.**

Montco Offshore, Inc.
17751 Hwy 3235
Post Office Box 850
Galliano, LA 70354
Phone: (985) 325-7157
Fax: (985) 325-6795

L/B KAYD CLASS 245'

SELF-ELEVATING VESSEL -- YEAR BUILT - 2005
OFFICIAL NUMBER – 1176595 – CALL SIGN – WDC7940

DIMENSIONS:

Length (Overall)	137.5'
Beam (Overall)	100'
Beam (Barge Only)	69'
Depth (Barge Only)	13'
Design Draft	7'

HULL CHARACTERISTICS:

Gross Tonnage (US Regulatory)	173 tons
Open Deck Area	6,550 sq. ft.
Total Usable Space	9,000 sq. ft.
Maximum Deck Load	950,000 lbs.

LEGS:

Number	3
Length	245'
Size	72" diameter x 1.5" wall thickness
Material	API 5LX-70 KSI Steel

PADS:

Length	40'
Width	16'
Depth	3'
Configuration	Raked on both ends

CRANE CAPACITY:

Number	3(API-2C Certified)
Primary Crane	175 Tons @ 30' radius
Boom Length	110' lattice type
Heal Pin	12' above deck
#1 Auxiliary Crane	40 Tons @ 10' radius
Boom Length	(Telescoping) 50'-70'
#2 Auxiliary Crane	25 Tons @ 10' radius
Boom Length	Fixed Boom 70'

PROPULSION:

Main Engines	(2) Caterpillar 3512
Horsepower/engine	1500 @ 1800 rpm
Reduction Gear	(2) Reintjes
Propellers	(2) CPP
Bow Thruster	350 hp hydraulic

CAPACITIES:

Fuel	32,380 gal
Potable Water	21,030 gal
Lube Oil	1410 gal
Hydraulic Oil	1400 gal
Submersible Pumps	2 @ 150 GPM each

GENERATORS:

Engines(2)	Caterpillar 3306
Generators(2)	190KW, 460 VAC, 3 PH, 60 Hz

LIVING QUARTERS:

Berths	Total 46 (10 Crew / 36 PACs)
Galley	Ref., Fr., Ice Maker, Range
Sanitary Facilities	(12) Heads
Laundry	(3) Washers and (3) Dryers

NAVIGATION EQUIPMENT:

Radar, VHF's, Fathometer, Compass,
Single Sideband, AIS, Auto Pilot, GPS,
Anemometer, Electronic Charting,
GMDSS Station, SSAS, SpeedDoppler

JACKING:

Maximum Working Water Depth	180'
Maximum Height of Deck above mud line (Subtract Penetration)	223'

SPECIAL FEATURES

Joystick Controlled, Separate VIP Room Facilities,
Zero Discharge Capability,
Marine Sewage Treatment System
Walk-in Cooler & Freezer

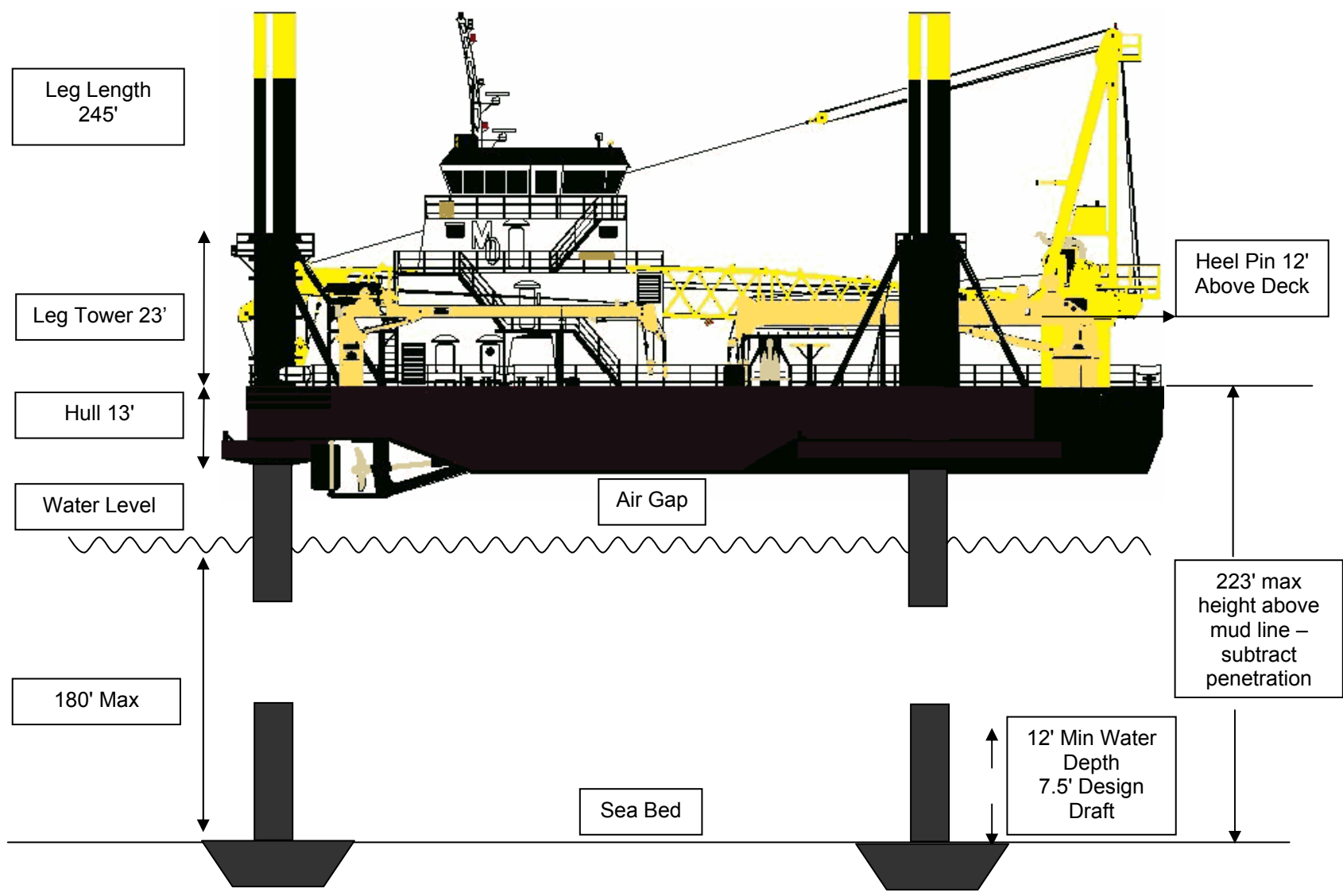
ESTIMATED SPEED: 6 Knots

FUEL CONSUMPTION:

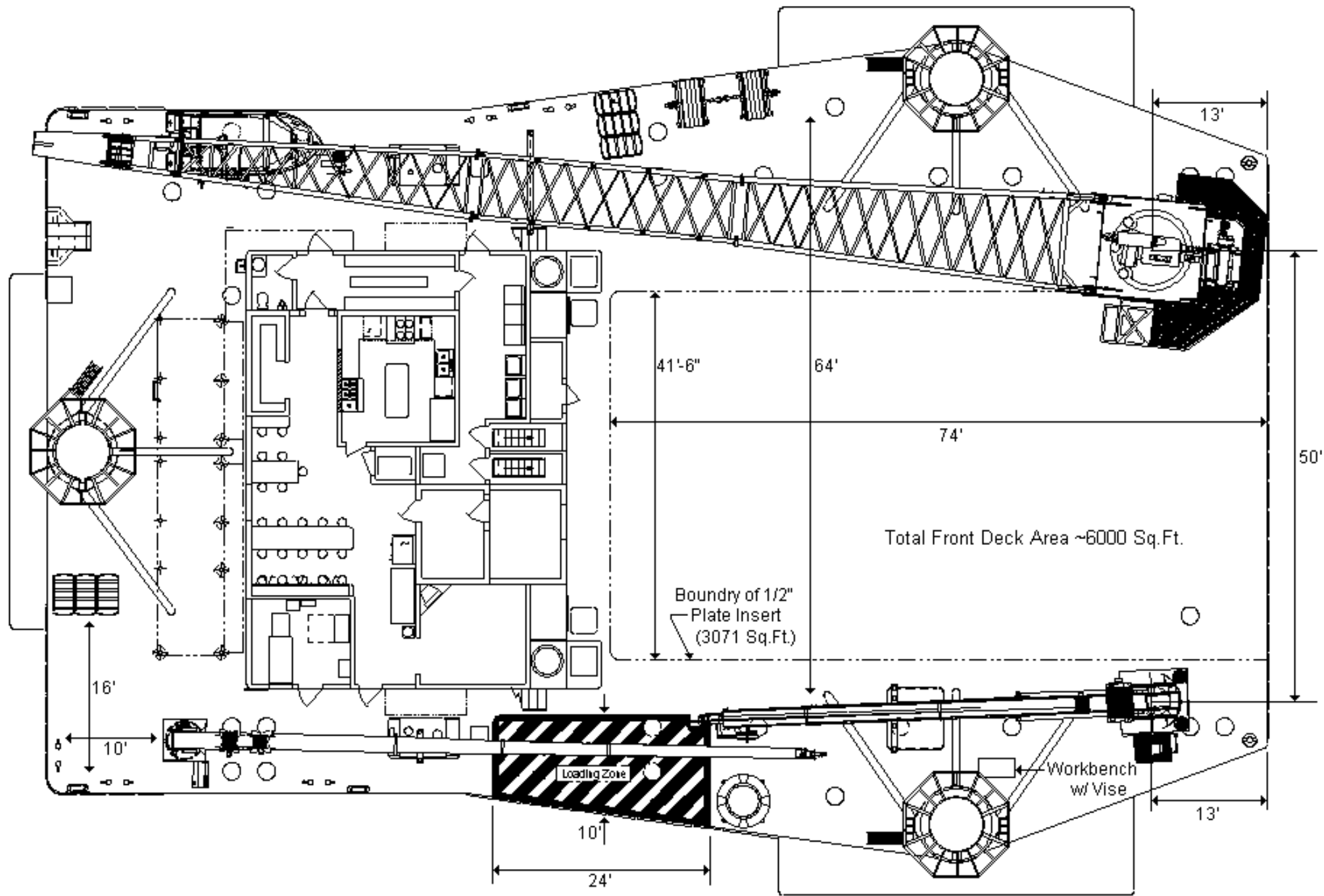
Main Engines	85 gal/hr = 2040 gal/day
Generators	4.8 gal/hr = 116 gal/day
Crane Engine	5-7 gal/hr

REGULATORY CLASSIFICATION:

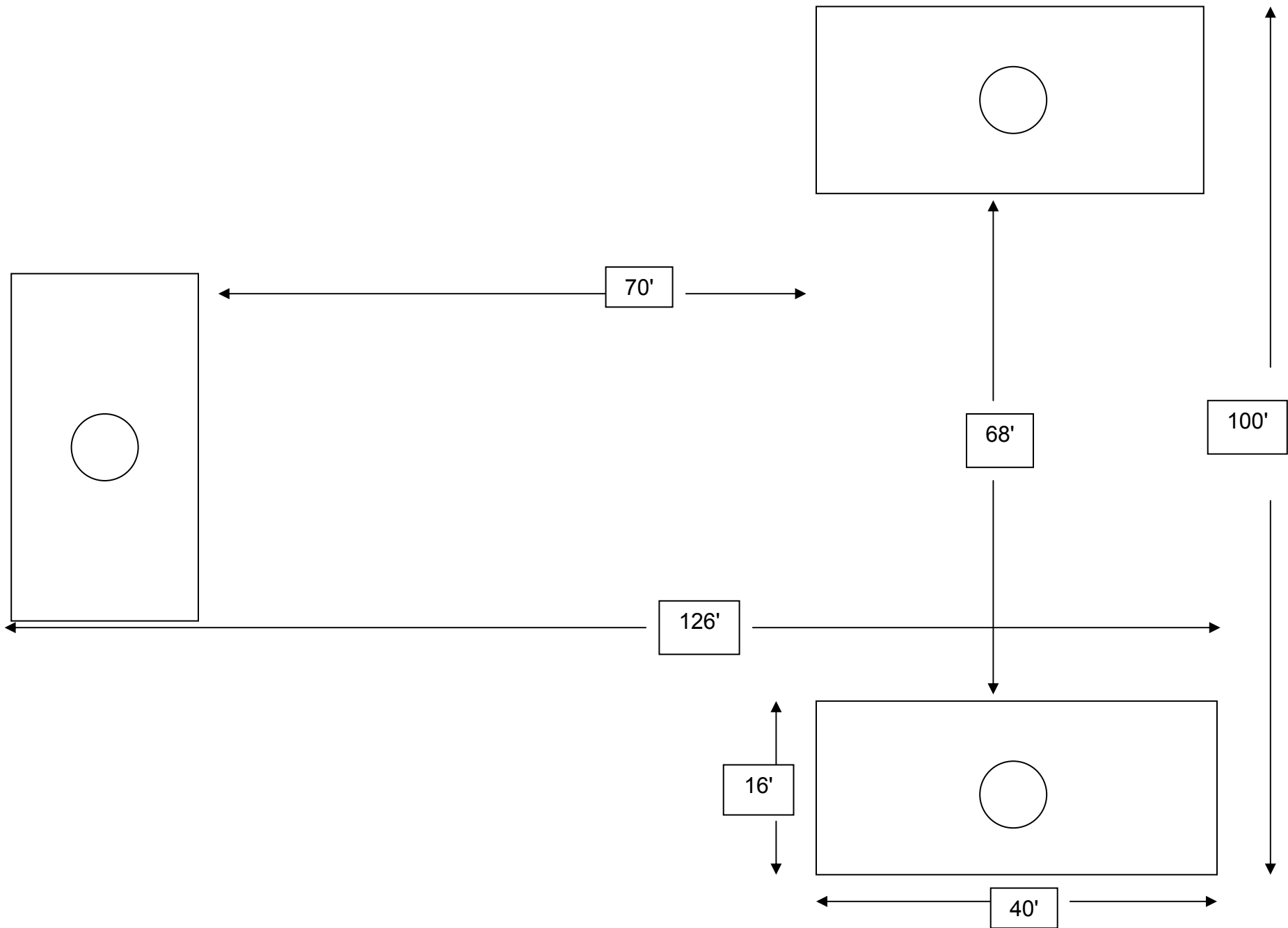
USCG O.S.V., SOLAS/MARPOL
ABS Class



L/B Kayd 245' Class



MAIN DECK PLAN



L/B Kayd (Distance between leg pads)

OM2200EHD

LOAD CAPACITY CHART

BOLLINGER

BOOM LENGTH: 110 FT
 SERIAL NUMBER: 0435
 LOCATION: -
 RELEASE DATE: 14-Jan-05

PART NUMBER: 4LRC-00652
 REVISION: A
 RELEASE BY: RC
 PAGE: 1 OF 2

WORKING RADIUS (ft)	BOOM ANGLE (deg)	MAIN HOIST					AUXILIARY HOIST		
		EIGHT (8) PART REEVING		SIX (6) PART REEVING		PERSONNEL RATED CAPACITY (lbs)	SINGLE (1) PART REEVING		PERSONNEL RATED CAPACITY (lbs)
		ONBOARD CAPACITY (lbs)	OFFBOARD CAPACITY (lbs)	ONBOARD CAPACITY (lbs)	OFFBOARD CAPACITY (lbs)		ONBOARD CAPACITY (lbs)	OFFBOARD CAPACITY (lbs)	
22.1	82	345,480	229,965	263,055	229,965	20,000	10,400	10,400	3,193
25	80.5	345,480	229,965	263,055	229,965	20,000	10,400	10,400	3,193
30	77.8	345,480	229,965	263,055	229,965	20,000	10,400	10,400	3,193
35	75.1	306,280	202,085	263,055	202,085	20,000	10,400	10,400	3,193
40	72.4	283,885	187,190	263,055	187,190	20,000	10,400	10,400	3,193
45	69.6	240,940	158,635	240,940	158,635	20,000	10,400	10,400	3,193
50	66.8	215,155	141,485	215,155	141,485	20,000	10,400	10,400	3,193
55	63.9	193,905	127,355	193,905	127,355	20,000	10,400	10,400	3,193
60	60.9	176,085	115,505	176,085	115,505	20,000	10,400	10,400	3,193
65	57.9	160,935	105,430	160,935	105,430	20,000	10,400	10,400	3,193
70	54.7	147,890	96,755	147,890	96,755	20,000	10,400	10,400	3,193
75	51.4	136,540	89,205	136,540	89,205	20,000	10,400	10,400	3,193
80	48	126,575	82,580	126,575	82,580	20,000	10,400	10,400	3,193
85	44.3	117,760	76,720	117,760	76,720	20,000	10,400	10,400	3,193
90	40.3	109,905	71,495	109,905	71,495	20,000	10,400	10,400	3,193
95	36	102,860	66,810	102,860	66,810	20,000	10,400	10,400	3,193
100	31.2	96,505	62,585	96,505	62,585	20,000	10,400	10,400	3,193
105	25.6	90,745	58,755	90,745	58,755	20,000	10,400	10,400	3,193
110	18.3	85,500	55,265	85,500	55,265	20,000	10,400	10,400	3,193
115	0	55,855	35,550	55,855	35,550	20,000	10,400	10,400	3,193

THE ABOVE RATINGS HAVE BEEN REDUCED FROM THE MAXIMUM CRANE RATINGS TO ACCOUNT FOR THE WEIGHT OF THE HOOK & BLOCK AS REQUIRED BY API 2C 6TH EDITION

THE ABOVE PERSONNEL RATINGS ARE BASED ON API 2C 6TH EDITION

OFFBOARD LOADS BASED ON A STANDARD C_v OF 2.0, UNLESS OTHERWISE STATED

USE ONBOARD REEVED CAPACITIES FOR LIFTING FROM OR LANDING ON THE PLATFORM.

USE OFFBOARD REEVED CAPACITIES FOR LIFTING FROM OR LANDING ON FLOATING VESSELS.

WARNING

OPERATION OF THIS EQUIPMENT BY PERSONNEL
 NOT QUALIFIED IS STRICTLY PROHIBITED
ENERGY CRANES

AMERICAN AERO - MODEL B-65T

LOAD CAPACITY CHART

BOLLINGER

BOOM LENGTH: 50 - 70 FT
 SERIAL NUMBER: 0434
 LOCATION: -
 RELEASE DATE: 2-Dec-04

PART NUMBER: 4LRC-00648
 REVISION: 0
 RELEASE BY: RC
 PAGE: 1 OF 2

WORKING RADIUS (ft)	MAIN HOIST - FOUR (4) PART REEVING							AUXILIARY HOIST - ANY POSITION		
	BOOM ANGLE (deg)	RETRACTED		BOOM ANGLE (deg)	EXTENDED		PERSONNEL RATED CAPACITY (lbs)	SINGLE (1) PART REEVING		PERSONNEL RATED CAPACITY (lbs)
		ONBOARD CAPACITY (lbs)	OFFBOARD CAPACITY (lbs)		ONBOARD CAPACITY (lbs)	OFFBOARD CAPACITY (lbs)		ONBOARD CAPACITY (lbs)	OFFBOARD CAPACITY (lbs)	
11	80	79,010	52,075	N/A	N/A	N/A	N/A	6,000	6,000	1,840
15	74	79,010	52,075	79	54,435	35,730	6,180	6,000	6,000	1,840
20	69	79,010	52,075	75	47,525	31,135	6,180	6,000	6,000	1,840
25	62	70,495	46,410	70	42,205	27,595	6,180	6,000	6,000	1,840
30	55	57,190	37,565	66	37,935	24,760	6,180	6,000	6,000	1,840
35	48	47,555	31,155	61	34,480	22,460	6,180	6,000	6,000	1,840
40	39	40,255	26,300	57	31,565	20,525	6,180	6,000	6,000	1,840
45	28	34,525	22,490	51	29,155	18,920	6,180	6,000	6,000	1,840
50	0	29,905	19,415	46	27,120	17,565	6,180	6,000	6,000	1,840
55	N/A	N/A	N/A	40	25,380	16,405	6,180	6,000	6,000	1,840
60	N/A	N/A	N/A	32	23,890	15,420	6,180	6,000	6,000	1,840
65	N/A	N/A	N/A	23	21,280	13,680	6,180	6,000	6,000	1,840
70	N/A	N/A	N/A	0	18,960	12,140	6,180	6,000	6,000	1,840

THE ABOVE RATINGS HAVE BEEN REDUCED FROM THE MAXIMUM CRANE RATINGS TO
 ACCOUNT FOR THE WEIGHT OF THE HOOK & BLOCK AS REQUIRED BY API 2C 6TH EDITION

THE ABOVE PERSONNEL RATINGS ARE BASED ON API 2C 6TH EDITION

OFFBOARD LOADS BASED ON A STANDARD C_v OF 2.0, USING DEFAULT DYNAMIC METHOD
 USE ONBOARD REEVED CAPACITIES FOR LIFTING FROM OR LANDING ON THE PLATFORM.
 USE OFFBOARD REEVED CAPACITIES FOR LIFTING FROM OR LANDING ON FLOATING VESSELS.

WARNING

OPERATION OF THIS EQUIPMENT BY PERSONNEL
 NOT QUALIFIED IS STRICTLY PROHIBITED

ENERGY CRANES

TITAN INDUSTRIES - MODEL T-20B
LOAD CAPACITY CHART
BOLLINGER

BOOM LENGTH: 70 FT
JOB NUMBER: 0433
LOCATION: 0
RELEASE DATE: 2-Dec-04

PART NUMBER: 4LRC-00649
REVISION: A
RELEASE BY: SR
PAGE: 1 OF 2

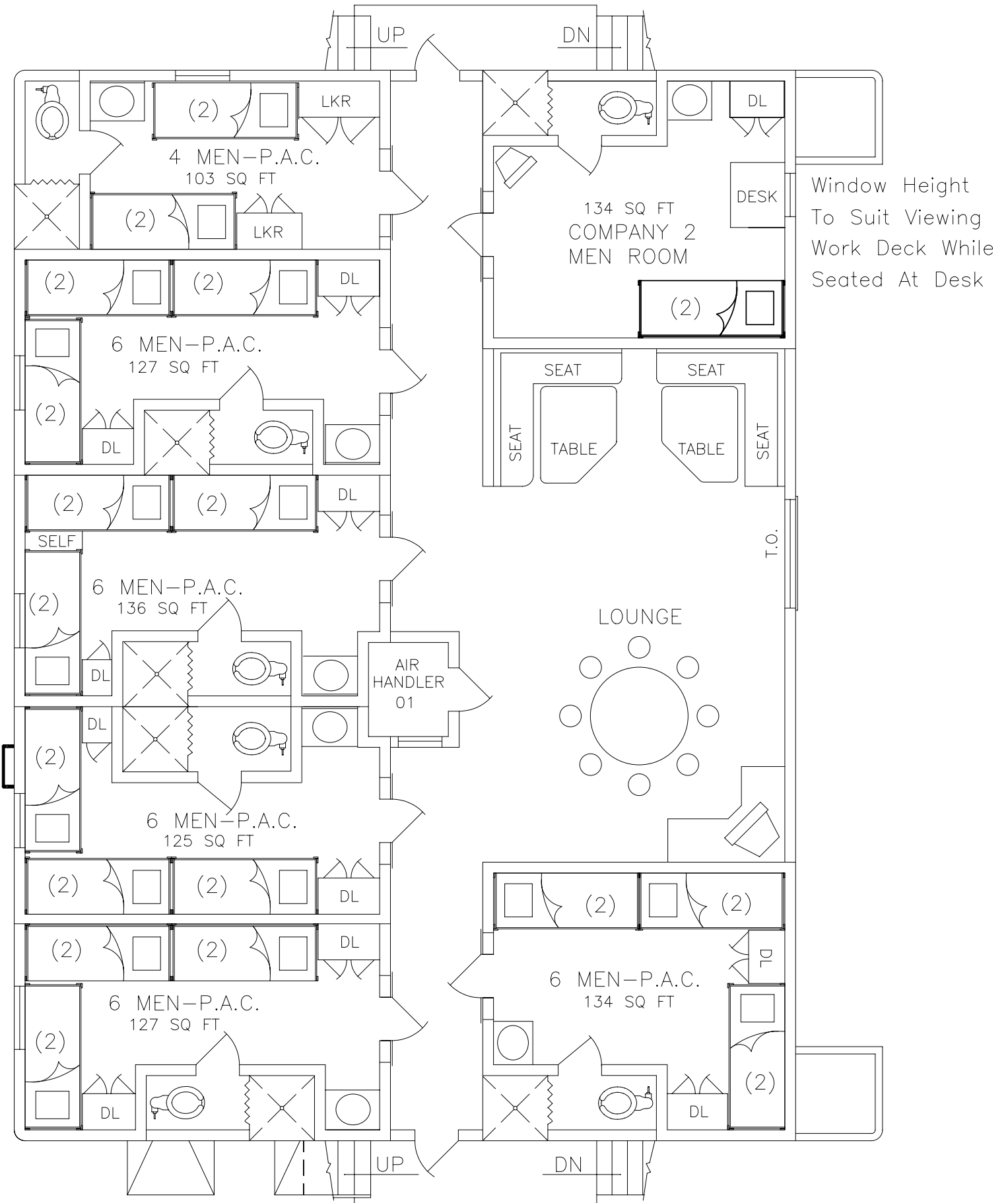
WORKING RADIUS (ft)	BOOM ANGLE (deg)	MAIN HOIST			AUXILIARY HOIST		
		FOUR (4) PART REEVING		PERSONNEL RATED CAPACITY (lbs)	SINGLE (1) PART REEVING		PERSONNEL RATED CAPACITY (lbs)
		ONBOARD CAPACITY (lbs)	OFFBOARD CAPACITY (lbs)		ONBOARD CAPACITY (lbs)	OFFBOARD CAPACITY (lbs)	
10.15	82	50,000	33,335	3,976	6,000	6,000	1,840
15	78	50,000	33,335	3,976	6,000	6,000	1,840
20	74	50,000	33,255	3,976	6,000	6,000	1,840
25	69	39,750	26,165	3,976	6,000	6,000	1,840
30	65	32,530	21,365	3,976	6,000	6,000	1,840
35	61	27,320	17,900	3,976	6,000	6,000	1,840
40	56	23,380	15,280	3,976	6,000	6,000	1,840
45	51	20,300	13,230	3,976	6,000	6,000	1,840
50	45	17,820	11,580	3,976	6,000	6,000	1,840
55	39	15,780	10,225	3,976	6,000	6,000	1,840
60	32	14,080	9,095	3,976	6,000	6,000	1,840
65	24	12,630	8,130	3,976	6,000	6,000	1,840
70	8	11,380	7,300	3,976	6,000	6,000	1,840
71	0	11,250	7,210	3,976	6,000	6,000	1,840

OFFBOARD LOADS BASED ON A STANDARD Cv OF 2.0, USING DEFAULT DYNAMIC METHOD
 USE ONBOARD REEVED CAPACITIES FOR LIFTING FROM OR LANDING ON THE PLATFORM.
 USE OFFBOARD REEVED CAPACITIES FOR LIFTING FROM OR LANDING ON FLOATING VESSELS.

WARNING

OPERATION OF THIS EQUIPMENT BY PERSONNEL
 NOT QUALIFIED IS STRICTLY PROHIBITED





Window Height
To Suit Viewing
Work Deck While
Seated At Desk

L/B KAYD Accommodations